

Anti-ANKLE2 antibody (350-450) (STJ119707)
STJ119707

GENERAL INFORMATION

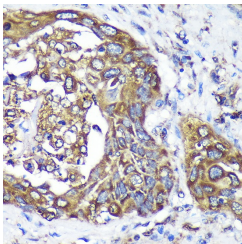
| | |
|--------------------------|--------------------|
| Product Type | Primary antibodies |
| Short Description | |
| Applications | WB/IHC-P/ELISA |
| Host/Source | Rabbit |
| Reactivity | Human/Mouse/Rat |

PRODUCT PROPERTIES

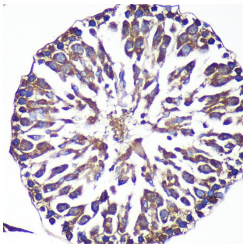
| | |
|-----------------------|--|
| Clonality | Polyclonal |
| Clone ID | |
| Concentration | Lot specific |
| Conjugation | Unconjugated |
| Purification | Affinity purification |
| Dilution Range | WB:1:500-1:2000 IHC-P:1:50-1:200 ELISA:Recommended starting concentration is 1 Mu g/mL. Please optimize the concentration based on your specific assay requirements. |
| Formulation | PBS with 0.01% Thimerosal, 50% Glycerol, pH 7.3. |
| Isotype | IgG |
| Storage | Store at -20°C for up to 1 year from the date of receipt, and avoid repeat freeze-thaw cycles. |
| Instruction | |

TARGET INFORMATION

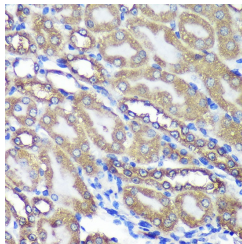
| | |
|---------------------------|---|
| Gene ID | 23141 |
| Gene Symbol | ANKLE2 |
| Uniprot ID | ANKL2_HUMAN |
| Immunogen | |
| Immunogen Region | 350-450 |
| Specificity | Recombinant fusion protein containing a sequence corresponding to amino acids 350-450 of human ANKLE2 (NP_055929.1). CRYNVMHVAAKENQASICQL TLDVLENPDFMRLMYPDDDE AMLQKRIRYVVDLYLNTDPK MGYDTPLHFACKFGNADVNN |
| Immunogen Sequence | VLSSHHLVKNSRNKYDKTP E |



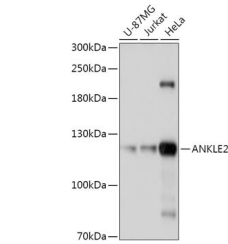
Immunohistochemistry analysis of ANKLE2 in paraffin-embedded Human lung cancer using ANKLE2 Rabbit polyclonal antibody (STJ119707) at dilution of 1:100 (40x lens). Perform microwave antigen retrieval with 10 mM PBS buffer pH 7.2 before commencing with immunohistochemistry staining protocol.



Immunohistochemistry analysis of ANKLE2 in paraffin-embedded Rat testis using ANKLE2 Rabbit polyclonal antibody (STJ119707) at dilution of 1:100 (40x lens). Perform microwave antigen retrieval with 10 mM PBS buffer pH 7.2 before commencing with immunohistochemistry staining protocol.



Immunohistochemistry analysis of ANKLE2 in paraffin-embedded Mouse kidney using ANKLE2 Rabbit polyclonal antibody (STJ119707) at dilution of 1:100 (40x lens). Perform microwave antigen retrieval with 10 mM PBS buffer pH 7.2 before commencing with immunohistochemistry staining protocol.



Western blot analysis of various lysates using ANKLE2 Rabbit polyclonal antibody (STJ119707) at 1:1000 dilution. Secondary antibody: HRP Goat Anti-Rabbit IgG (H+L) (STJS000856) at 1:10000 dilution. Lysates/proteins: 25 Mu g per lane. Blocking buffer: 3% nonfat dry milk in TBST. Detection: ECL Basic Kit. Exposure time: 10s.

This product is suitable for in-vitro studies under the RESEARCH USE ONLY [RUO] licence. This product must not be used as for diagnostic or other medical purposes.
St John's Laboratory Ltd, Knowledge Dock Business Centre, University Way, London, E16 2RD | Tel: 0208 223 3081