

Anti-TRPM1 antibody (1460-1540) (STJ119601)

STJ119601

GENERAL INFORMATION

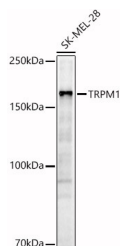
Product Type	Primary antibodies
Short Description	
Applications	WB/ELISA
Host/Source	Rabbit
Reactivity	Human

PRODUCT PROPERTIES

Clonality	Polyclonal
Clone ID	
Concentration	Lot specific
Conjugation	Unconjugated
Purification	Affinity purification
Dilution Range	WB:1:500-1:1000 ELISA:Recommended starting concentration is 1 µg/mL. Please optimize the concentration based on your specific assay requirements.
Formulation	PBS with 0.05% Proclin300, 50% Glycerol, pH 7.3.
Isotype	IgG
Storage Instruction	Store at -20°C for up to 1 year from the date of receipt, and avoid repeat freeze-thaw cycles.

TARGET INFORMATION

Gene ID	4308
Gene Symbol	TRPM1
Uniprot ID	TRPM1_HUMAN
Immunogen	
Immunogen Region	1460-1540
Specificity	Recombinant fusion protein containing a sequence corresponding to amino acids 1460-1540 of human TRPM1 (NP_002411.3).
Immunogen Sequence	SITDQQLTTEWQCQVQKITR SHSTDIPYIVSEAAVQAEHK EQFADMQDEHHVAEAIPIRP RLSTLTITDRNGMENLLSVKP D



Western blot analysis of SK-MEL-28, using TRPM1 antibody (STJ119601) at 1:800 dilution. Secondary antibody: HRP Goat Anti-rabbit IgG (H+L) (STJ5000856) at 1:10000 dilution. Lysates/proteins: 25 µg per lane. Blocking buffer: 3% non-fat dry milk in TBST. Detection: ECL Basic Kit. Exposure time: 60s.

This product is suitable for in-vitro studies under the RESEARCH USE ONLY [RUO] licence. This product must not be used as for diagnostic or other medical purposes.
St John's Laboratory Ltd, Knowledge Dock Business Centre, University Way, London, E16 2RD | Tel: 0208 223 3081