

Anti-DPH2 antibody (120-330) (STJ119582)

STJ119582

GENERAL INFORMATION

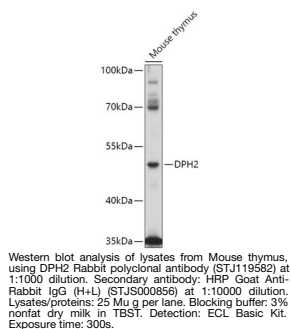
Product Type	Primary antibodies
Short Description	
Applications	WB/ELISA
Host/Source	Rabbit
Reactivity	Mouse

PRODUCT PROPERTIES

Clonality	Polyclonal
Clone ID	
Concentration	Lot specific
Conjugation	Unconjugated
Purification	Affinity purification
Dilution	WB:1:500-1:2000
Range	ELISA:Recommended starting concentration is 1 Mu g/mL. Please optimize the concentration based on your specific assay requirements.
Formulation	PBS with 0.01% Thimerosal, 50% Glycerol, pH 7.3.
Isotype	IgG
Storage	Store at -20°C for up to 1 year from the date of receipt, and avoid repeat freeze-thaw cycles.
Instruction	

TARGET INFORMATION

Gene ID	1802
Gene Symbol	DPH2
Uniprot ID	DPH2_HUMAN
Immunogen	
Immunogen Region	120-330
Specificity	Recombinant fusion protein containing a sequence corresponding to amino acids 120-330 of human DPH2 (NP_001375.2).
Immunogen Sequence	<p> VAFVLRQRSVALELCVKA FE AQNPDPKAPVLLSE PACAH ALEALATLLRPR YDLLVSS PAF PQPVGSLSP EPMPLERF </p> <p> GRRFPLAPGRRLEEYGAF YV GGSKASPD PDLDPDL SRLLL GWAPGQPF SSCCPDTGKTQD EGARAGRLRARRRYL VERAR </p> <p> DARVVGLLAGTLGVAQH REA LAHLRNLTQA AGKRSYVLA L GRPTAKLANF </p>



This product is suitable for in-vitro studies under the RESEARCH USE ONLY [RUO] licence. This product must not be used as for diagnostic or other medical purposes.
 St John's Laboratory Ltd, Knowledge Dock Business Centre, University Way, London, E16 2RD | Tel: 0208 223 3081