

Anti-SEPT1 antibody (270-370) (STJ119580)

STJ119580

GENERAL INFORMATION

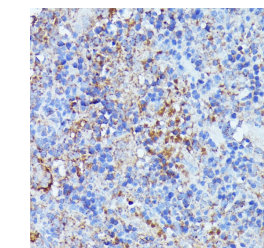
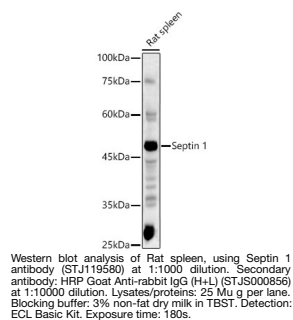
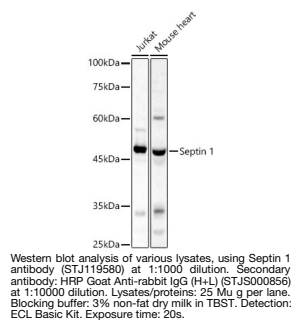
Product Type	Primary antibodies
Short Description	
Applications	WB/IHC-P/ELISA
Host/Source	Rabbit
Reactivity	Human/Mouse/Rat

PRODUCT PROPERTIES

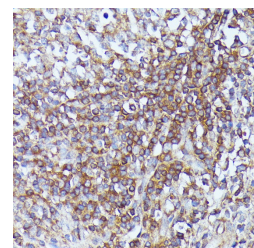
Clonality	Polyclonal
Clone ID	
Concentration	Lot specific
Conjugation	Unconjugated
Purification	Affinity purification
Dilution Range	WB:1:500-1:1000 IHC-P:1:50-1:100 ELISA:Recommended starting concentration is 1 Mu g/mL. Please optimize the concentration based on your specific assay requirements.
Formulation	PBS with 0.01% Thimerosal, 50% Glycerol, pH 7.3.
Isotype	IgG
Storage	Store at -20°C for up to 1 year from the date of receipt, and avoid repeat freeze-thaw cycles.
Instruction	

TARGET INFORMATION

Gene ID	1731
Gene Symbol	SEPTIN1
Uniprot ID	SEPT1_HUMAN
Immunogen	
Immunogen Region	270-370
Specificity	Recombinant fusion protein containing a sequence corresponding to amino acids 270-370 of human Septin 1 (NP_443070.5). IPFAVVGSCCEVVRDGGNRPV RGRYSWGTVEVENPHHCDF LNLRRMLVQTHLQDLKEVTH DLYEGYRARCQLQSLARPGA
Sequence	RDRASRSKLSRQSATEIPLP M



Immunohistochemistry analysis of paraffin-embedded rat spleen using Septin 1 antibody (STJ119580) at dilution of 1:100 (40x lens). Perform microwave antigen retrieval with 10 mM PBS buffer pH 7.2 before commencing with immunohistochemistry staining protocol.



Immunohistochemistry analysis of paraffin-embedded human appendix using Septin 1 antibody (STJ119580) at dilution of 1:100 (40x lens). Perform microwave antigen retrieval with 10 mM PBS buffer pH 7.2 before commencing with immunohistochemistry staining protocol.

This product is suitable for in-vitro studies under the RESEARCH USE ONLY [RUO] licence. This product must not be used as for diagnostic or other medical purposes.
St John's Laboratory Ltd, Knowledge Dock Business Centre, University Way, London, E16 2RD | Tel: 0208 223 3081