

## Anti-CNTN1 antibody (250-350) (STJ119575)

STJ119575

### GENERAL INFORMATION

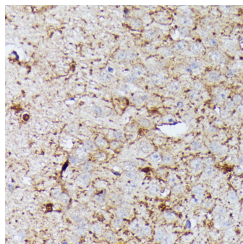
|                          |                    |
|--------------------------|--------------------|
| <b>Product Type</b>      | Primary antibodies |
| <b>Short Description</b> |                    |
| <b>Applications</b>      | WB/IHC-P/ELISA     |
| <b>Host/Source</b>       | Rabbit             |
| <b>Reactivity</b>        | Human/Mouse/Rat    |

### PRODUCT PROPERTIES

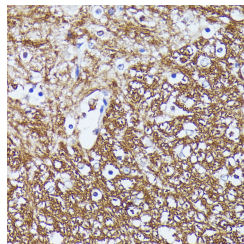
|                            |  |
|----------------------------|--|
| <b>Clonality</b>           | Polyclonal   |
| <b>Clone ID</b>            |  |
| <b>Concentration</b>       | Lot specific   |
| <b>Conjugation</b>         | Unconjugated   |
| <b>Purification</b>        | Affinity purification  |
| <b>Dilution Range</b>      | WB:1:500-1:2000<br>IHC-P:1:50-1:200<br>ELISA:Recommended starting concentration is 1 µg/mL. Please optimize the concentration based on your specific assay requirements. |
| <b>Formulation</b>         | PBS with 0.01% Thimerosal, 50% Glycerol, pH 7.3.   |
| <b>Isotype</b>             | IgG  |
| <b>Storage Instruction</b> | Store at -20°C for up to 1 year from the date of receipt, and avoid repeat freeze-thaw cycles.   |

### TARGET INFORMATION

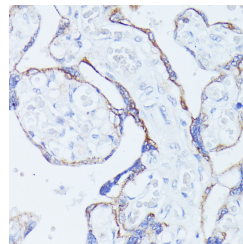
|                           |  |
|---------------------------|--|
| <b>Gene ID</b>            | 1272   |
| <b>Gene Symbol</b>        | CNTN1  |
| <b>Uniprot ID</b>         | CNTN1_HUMAN  |
| <b>Immunogen</b>          |  |
| <b>Immunogen Region</b>   | 250-350  |
| <b>Specificity</b>        | A synthetic peptide corresponding to a sequence within amino acids 250-350 of human CNTN1 (NP_778203.1).     |
| <b>Immunogen Sequence</b> | LECFALGNPVPDIRWRKVL PMPSTAEISTSGAVLKIFNI QLEDEGIYECEAENIRGKDK HQARIYVQAFPEWVEHINDT<br>EVDIGSDLYWPCVATGKPIP T |



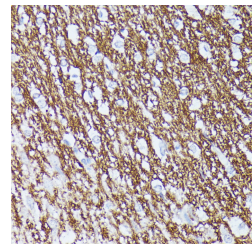
Immunohistochemistry analysis of CNTN1 in paraffin-embedded mouse brain using CNTN1 Rabbit polyclonal antibody (STJ119575) at dilution of 1:100 (40x lens). Perform microwave antigen retrieval with 10 mM PBS buffer pH 7.2 before commencing with immunohistochemistry staining protocol.



Immunohistochemistry analysis of CNTN1 in paraffin-embedded mouse spinal cord using CNTN1 Rabbit polyclonal antibody (STJ119575) at dilution of 1:100 (40x lens). Perform microwave antigen retrieval with 10 mM PBS buffer pH 7.2 before commencing with immunohistochemistry staining protocol.



Immunohistochemistry analysis of CNTN1 in paraffin-embedded human placenta using CNTN1 Rabbit polyclonal antibody (STJ119575) at dilution of 1:100 (40x lens). Perform microwave antigen retrieval with 10 mM PBS buffer pH 7.2 before commencing with immunohistochemistry staining protocol.



Immunohistochemistry analysis of CNTN1 in paraffin-embedded Rat brain using CNTN1 Rabbit polyclonal antibody (STJ119575) at dilution of 1:100 (40x lens). Perform microwave antigen retrieval with 10 mM PBS buffer pH 7.2 before commencing with immunohistochemistry staining protocol.

This product is suitable for in-vitro studies under the RESEARCH USE ONLY [RUO] licence. This product must not be used as for diagnostic or other medical purposes.  
St John's Laboratory Ltd, Knowledge Dock Business Centre, University Way, London, E16 2RD | Tel: 0208 223 3081