

Anti-MAP1LC3B antibody (1-125) [S5MM] (STJ119545)

STJ119545

GENERAL INFORMATION

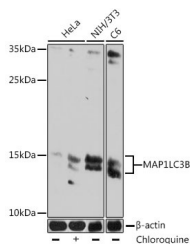
Product Type	Primary antibodies
Short Description	
Applications	WB/ELISA
Host/Source	Mouse
Reactivity	Human/Mouse/Rat

PRODUCT PROPERTIES

Clonality	Monoclonal
Clone ID	S5MM
Concentration	Lot specific
Conjugation	Unconjugated
Purification	Affinity purification
Dilution Range	WB:1:1000-1:2000 ELISA:Recommended starting concentration is 1 Mu g/mL. Please optimize the concentration based on your specific assay requirements.
Formulation	PBS with 0.05% Proclin300, 50% Glycerol, pH 7.3.
Isotype	IgG2ak
Storage Instruction	Store at -20°C for up to 1 year from the date of receipt, and avoid repeat freeze-thaw cycles.

TARGET INFORMATION

Gene ID	81631
Gene Symbol	MAP1LC3B
Uniprot ID	MLP3B_HUMAN
Immunogen	
Immunogen Region	1-125
Specificity	Recombinant fusion protein containing a sequence corresponding to amino acids 1-125 of human LC3B (NP_073729.1). MPSEKTFKQRTFEQVRVEDV RLIREQHPTKIPVIERKYK EKQLPVLDTKFLVPDHVNM SELIKIIRRLQLNANQAFF
Sequence	LLVNGHSMVSVSTPISEVYE SEKDEDEGLFYMYASQETFG MKLSV



Western blot analysis of various lysates using LC3B Mouse monoclonal antibody (STJ119545) at 1:1000 dilution. HeLa cells were treated by Chloroquine (50 Mu M) at 37 °C for 20 hours. Secondary antibody: HRP Goat Anti-Mouse IgG (H+L) at 1:10000 dilution. Lysates/proteins: 25 Mu g per lane. Blocking buffer: 3% nonfat dry milk in TBST. Detection: ECL Basic Kit. Exposure time: 180s.

This product is suitable for in-vitro studies under the RESEARCH USE ONLY [RUO] licence. This product must not be used as for diagnostic or other medical purposes.
St John's Laboratory Ltd, Knowledge Dock Business Centre, University Way, London, E16 2RD | Tel: 0208 223 3081