

Anti-CD36 antibody (50-150) (STJ119465)
STJ119465

GENERAL INFORMATION

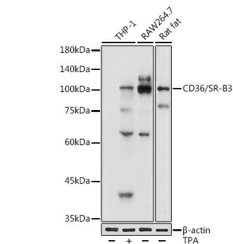
Product Type	Primary antibodies
Short Description	
Applications	WB/IHC-P/ELISA
Host/Source	Rabbit
Reactivity	Human/Mouse/Rat

PRODUCT PROPERTIES

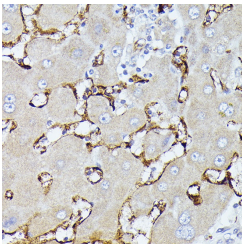
Clonality	Polyclonal
Clone ID	
Concentration	Lot specific
Conjugation	Unconjugated
Purification	Affinity purification
Dilution Range	WB:1:500-1:1000 IHC-P:1:50-1:200 ELISA:Recommended starting concentration is 1 Mu g/mL. Please optimize the concentration based on your specific assay requirements.
Formulation	PBS with 0.05% Proclin300, 50% Glycerol, pH 7.3.
Isotype	IgG
Storage	Store at -20°C for up to 1 year from the date of receipt, and avoid repeat freeze-thaw cycles.
Instruction	

TARGET INFORMATION

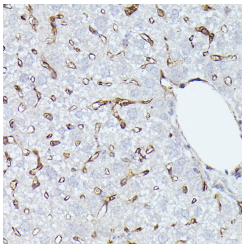
Gene ID	948
Gene Symbol	CD36
Uniprot ID	CD36_HUMAN
Immunogen	
Immunogen Region	50-150
Specificity	A synthetic peptide corresponding to a sequence within amino acids 50-150 of human CD36/SR-B3 (NP_000063.2). AFKNNVKTGTEVYRQFWIFD VQNPQEVMMNSSNIQVKQRG PYTYRVRFLLAKENVTQDAED NTVSFLQPNGAIFEPSLSVG
Immunogen Sequence	TEADNFTVLNLAVAASHHY Q



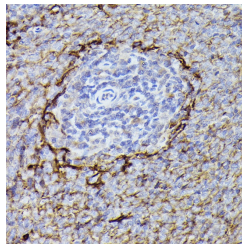
Western blot analysis of extracts of various cell lines, using CD36/SR-B3 antibody (STJ119465) at 1:1000 dilution. THP-1 cells were treated by PMA/TPA (200 nM) at 37 °C for 15 minutes after serum-starvation overnight. Secondary antibody: HRP Goat Anti-rabbit IgG (H+L) at 1:10000 dilution. Lysates/proteins: 25ug per lane. Blocking buffer: 3% nonfat dry milk in TBST. Detection: ECL Basic Kit. Exposure time: 10s.



Immunohistochemistry of paraffin-embedded human liver using CD36/SR-B3 rabbit polyclonal antibody (STJ119465) at dilution of 1:100 (40x lens).



Immunohistochemistry of paraffin-embedded mouse liver using CD36/SR-B3 rabbit polyclonal antibody (STJ119465) at dilution of 1:100 (40x lens).



Immunohistochemistry of paraffin-embedded rat spleen using CD36/SR-B3 rabbit polyclonal antibody (STJ119465) at dilution of 1:100 (40x lens).

This product is suitable for in-vitro studies under the RESEARCH USE ONLY [RUO] licence. This product must not be used as for diagnostic or other medical purposes.
St John's Laboratory Ltd, Knowledge Dock Business Centre, University Way, London, E16 2RD | Tel: 0208 223 3081