

Anti-LMNA antibody (403-572) (STJ119449)

STJ119449

GENERAL INFORMATION

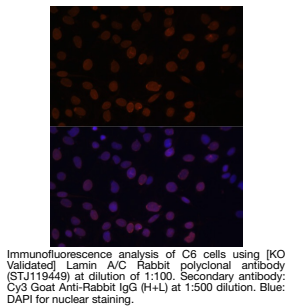
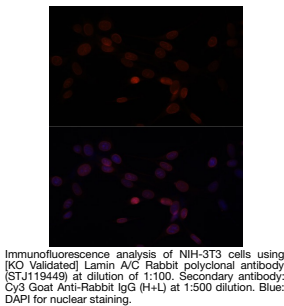
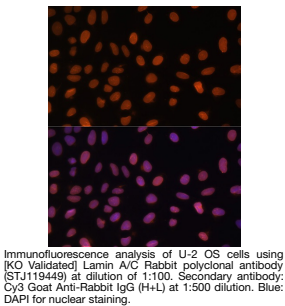
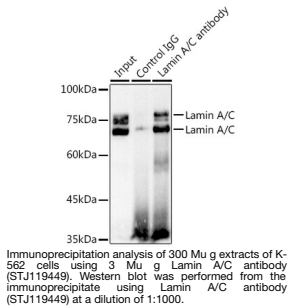
Product Type	Primary antibodies
Short Description	
Applications	WB/IHC-P/IF/ICC/IP/ELISA
Host/Source	Rabbit
Reactivity	Human/Mouse/Rat

PRODUCT PROPERTIES

Clonality	Polyclonal
Clone ID	
Concentration	Lot specific
Conjugation	Unconjugated
Purification	Affinity purification
Dilution Range	WB: 1:200-1:1000 IHC-P: 1:50-1:200 IF/ICC: 1:50-1:200 IP: 0.5 µg-4 µg antibody for 200 µg-400 µg extracts of whole cells ELISA: Recommended starting concentration is 1 µg/mL. Please optimize the concentration based on your specific application.
Formulation	PBS with 0.05% Proclin300, 50% Glycerol, pH 7.3.
Isotype	IgG
Storage	Store at -20°C for up to 1 year from the date of receipt, and avoid repeat freeze-thaw cycles.
Instruction	

TARGET INFORMATION

Gene ID	4000
Gene Symbol	LMNA
Uniprot ID	LMNA_HUMAN
Immunogen	
Immunogen Region	403-572
Specificity	Recombinant fusion protein containing a sequence corresponding to amino acids 403-572 of human Lamin A/C (NP_733821.1).
Immunogen Sequence	SSHSSTQGGGSVTKRKLE STESRSSFSQHARTSGRVAV EEVDEEGKFVRLRNKSNEDQ SMGNWQIKRQNGDDPLLTYR FPPKFTLKAGQVVTIWAAGA GATHSPPTDLVWKAQNTWGC GNSLRALTALNSTGEEVAMRK LVRSVTVVEDEDEDGDDL HHHHGSHCCS



This product is suitable for in-vitro studies under the RESEARCH USE ONLY [RUO] licence. This product must not be used as for diagnostic or other medical purposes.
St John's Laboratory Ltd, Knowledge Dock Business Centre, University Way, London, E16 2RD | Tel: 0208 223 3081