

Anti-IFNA2 antibody (100 aa) (STJ119446)

STJ119446

GENERAL INFORMATION

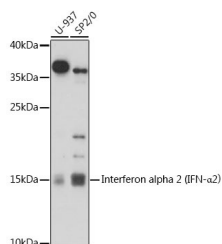
Product Type	Primary antibodies
Short Description	
Applications	WB/ELISA
Host/Source	Rabbit
Reactivity	Human/Mouse

PRODUCT PROPERTIES

Clonality	Polyclonal
Clone ID	
Concentration	Lot specific
Conjugation	Unconjugated
Purification	Affinity purification
Dilution Range	WB:1:500-1:2000 ELISA:Recommended starting concentration is 1 Mu g/mL. Please optimize the concentration based on your specific assay requirements.
Formulation	PBS with 0.01% Thimerosal, 50% Glycerol, pH 7.3.
Isotype	IgG
Storage Instruction	Store at -20°C for up to 1 year from the date of receipt, and avoid repeat freeze-thaw cycles.

TARGET INFORMATION

Gene ID	3440
Gene Symbol	IFNA2
Uniprot ID	IFNA2_HUMAN
Immunogen	
Immunogen Region	100 aa
Specificity	A synthetic peptide corresponding to a sequence within amino acids 100 to the C-terminus of human Interferon alpha 2 (IFN-Alpha 2) (NP_000596.2).
Immunogen Sequence	DETLLDKFYTELYQQNLNLE ACVIQGVGVGTETPLMKEDSI LAVRKYFQRITLYLKEKKYS PCAWEVVRAEIMRSFSLSTN LQESLRKE



Western blot analysis of various lysates using Interferon alpha 2 (IFN-Alpha 2) Rabbit polyclonal antibody (STJ119446) at 1:1000 dilution. Secondary antibody: HRP-Goat Anti-Rabbit IgG (H+L) (STJ5000856) at 1:10000 dilution. Lysates/proteins: 25 Mu g per lane. Blocking buffer: 3% nonfat dry milk in TBST. Detection: ECL Basic Kit. Exposure time: 90s.

This product is suitable for in-vitro studies under the RESEARCH USE ONLY [RUO] licence. This product must not be used as for diagnostic or other medical purposes.
St John's Laboratory Ltd, Knowledge Dock Business Centre, University Way, London, E16 2RD | Tel: 0208 223 3081