

Anti-BMPR1B antibody (1-126) (STJ119430)

STJ119430

GENERAL INFORMATION

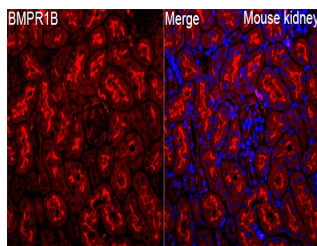
Product Type	Primary antibodies
Short Description	
Applications	IHC-P/IF/ICC/ELISA
Host/Source	Rabbit
Reactivity	Human/Mouse/Rat

PRODUCT PROPERTIES

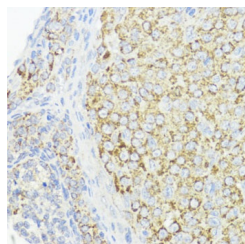
Clonality	Polyclonal
Clone ID	
Concentration	Lot specific
Conjugation	Unconjugated
Purification	Affinity purification
Dilution Range	IHC-P: 1:50-1:200 IF/ICC: 1:500-1:1000 ELISA: Recommended starting concentration is 1 µg/mL. Please optimize the concentration based on your specific assay requirements.
Formulation	PBS with 0.01% Thimerosal, 50% Glycerol, pH 7.3.
Isotype	IgG
Storage Instruction	Store at -20°C for up to 1 year from the date of receipt, and avoid repeat freeze-thaw cycles.

TARGET INFORMATION

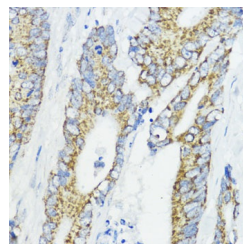
Gene ID	658
Gene Symbol	BMPR1B
Uniprot ID	BMR1B_HUMAN
Immunogen	
Immunogen Region	1-126
Specificity	A synthetic peptide corresponding to a sequence within amino acids 1-126 of human BMPR1B (NP_001194.1).
Immunogen Sequence	MLLSAGKLVNVTKKEDGES TAPTPRPKVLRCCKHHCP E DSVNNICSTDGYCFTMIEED DSGLPWVTSGCLGLEGSDFQ CRDTPIPHQRRSIECCTERN ECKNDLHPTLPPLKNRDFVD GPIHHR



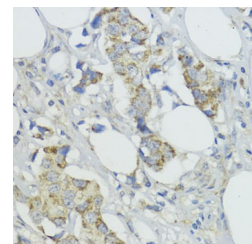
Immunofluorescence analysis of Mouse kidney tissue using BMPR1B Rabbit polyclonal antibody (STJ119430) at a dilution of 1:500 (40x lens). Secondary antibody: Cy3-conjugated Goat anti-Rabbit IgG (H+L) at 1:500 dilution. Blue: DAPI for nuclear staining. High pressure antigen retrieval performed with 0.01M Citrate Buffer (pH 6.0) prior to IF staining.



Immunohistochemistry analysis of BMPR1B in paraffin-embedded rat ovary using BMPR1B Rabbit polyclonal antibody (STJ119430) at dilution of 1:200 (40x lens). Perform microwave antigen retrieval with 10 mM PBS buffer pH 7.2 before commencing with immunohistochemistry staining protocol.



Immunohistochemistry analysis of BMPR1B in paraffin-embedded human colon carcinoma using BMPR1B Rabbit polyclonal antibody (STJ119430) at dilution of 1:200 (40x lens). Perform microwave antigen retrieval with 10 mM PBS buffer pH 7.2 before commencing with immunohistochemistry staining protocol.



Immunohistochemistry analysis of BMPR1B in paraffin-embedded human mammary cancer using BMPR1B Rabbit polyclonal antibody (STJ119430) at dilution of 1:200 (40x lens). Perform microwave antigen retrieval with 10 mM PBS buffer pH 7.2 before commencing with immunohistochemistry staining protocol.

This product is suitable for in-vitro studies under the RESEARCH USE ONLY [RUO] licence. This product must not be used as for diagnostic or other medical purposes.
St John's Laboratory Ltd, Knowledge Dock Business Centre, University Way, London, E16 2RD | Tel: 0208 223 3081