

Anti-MAPK1/MAPK3 antibody (200-300) (STJ119426)
STJ119426

GENERAL INFORMATION

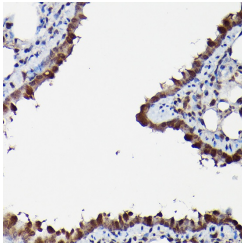
Product Type	Primary antibodies
Short Description	
Applications	WB/IHC-P/ELISA
Host/Source	Rabbit
Reactivity	Human/Mouse/Rat

PRODUCT PROPERTIES

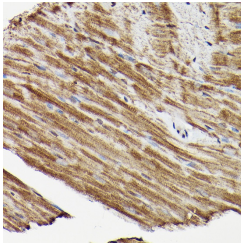
Clonality	Polyclonal
Clone ID	
Concentration	Lot specific
Conjugation	Unconjugated
Purification	Affinity purification
Dilution Range	WB:1:500-1:2000 IHC-P:1:50-1:200 ELISA:Recommended starting concentration is 1 Mu g/mL. Please optimize the concentration based on your specific assay requirements.
Formulation	PBS with 0.01% Thimerosal, 50% Glycerol, pH 7.3.
Isotype	IgG
Storage Instruction	Store at -20°C for up to 1 year from the date of receipt, and avoid repeat freeze-thaw cycles.

TARGET INFORMATION

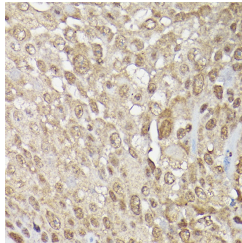
Gene ID	5594 5595
Gene Symbol	MAPK1 MAPK3
Uniprot ID	MK01_HUMAN MK03_HUMAN
Immunogen	200-300
Region	
Specificity	A synthetic peptide corresponding to a sequence within amino acids 200-300 of human MAPK1/MAPK3ERK1/2 (P27361/P28482).
Immunogen Sequence	FLTEYVATRWRAPPEIMLNS KGYTKSIDIWSVGILAEML SNRPIFPGKHYLDQLNHILG ILGSPSQEDLNCIINMKARN YLQSLPSKTKVAVAKLFPKS D/LNSKGYTKSIDIWSVGC LAEMLSNRPIFPGKHYLDQL NHILGILGSPSQEDLNCIIN LKARNYLLSLPHKNKVPWNR LFPNADSKALDLLDKMLTFN PHK



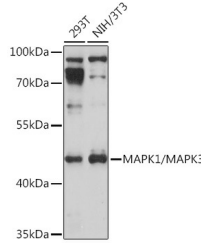
Immunohistochemistry analysis of MAPK1/MAPK3 in paraffin-embedded rat lung using MAPK1/MAPK3 Rabbit polyclonal antibody (STJ119426) at dilution of 1:200 (40x lens). Perform high pressure antigen retrieval with 10 mM citrate buffer pH 6.0 before commencing with immunohistochemistry staining protocol.



Immunohistochemistry analysis of MAPK1/MAPK3 in paraffin-embedded mouse heart using MAPK1/MAPK3 Rabbit polyclonal antibody (STJ119426) at dilution of 1:200 (40x lens). Perform high pressure antigen retrieval with 10 mM citrate buffer pH 6.0 before commencing with immunohistochemistry staining protocol.



Immunohistochemistry analysis of MAPK1/MAPK3 in paraffin-embedded human urothelial carcinoma using MAPK1/MAPK3 Rabbit polyclonal antibody (STJ119426) at dilution of 1:200 (40x lens). Perform high pressure antigen retrieval with 10 mM citrate buffer pH 6.0 before commencing with immunohistochemistry staining protocol.



Western blot analysis of various lysates using MAPK1/MAPK3 Rabbit polyclonal antibody (STJ119426) at 1:1000 dilution. Secondary antibody: HRP Goat Anti-Rabbit IgG (H+L) (STJ5000856) at 1:10000 dilution. Lysates/proteins: 25 Mu g per lane. Blocking buffer: 3% nonfat dry milk in TBST. Detection: ECL Basic Kit. Exposure time: 10s.

This product is suitable for in-vitro studies under the RESEARCH USE ONLY [RUO] licence. This product must not be used as for diagnostic or other medical purposes.
St John's Laboratory Ltd, Knowledge Dock Business Centre, University Way, London, E16 2RD | Tel: 0208 223 3081