

Anti-MEX3D antibody (500-600) (STJ119422)

STJ119422

GENERAL INFORMATION

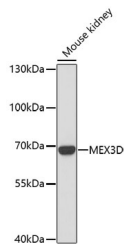
Product Type	Primary antibodies
Short Description	
Applications	WB/ELISA
Host/Source	Rabbit
Reactivity	Mouse

PRODUCT PROPERTIES

Clonality	Polyclonal
Clone ID	
Concentration	Lot specific
Conjugation	Unconjugated
Purification	Affinity purification
Dilution Range	WB:1:500-1:2000 ELISA:Recommended starting concentration is 1 Mu g/mL. Please optimize the concentration based on your specific assay requirements.
Formulation	PBS with 0.01% Thimerosal, 50% Glycerol, pH 7.3.
Isotype	IgG
Storage	Store at -20°C for up to 1 year from the date of receipt, and avoid repeat freeze-thaw cycles.
Instruction	

TARGET INFORMATION

Gene ID	399664
Gene Symbol	MEX3D
Uniprot ID	MEX3D_HUMAN
Immunogen	
Immunogen Region	500-600
Specificity	A synthetic peptide corresponding to a sequence within amino acids 500-600 of human MEX3D (NP_976049.3).
Immunogen Sequence	AGARRSSGAGTPRHSPTLPE PGGLRLELPLSRRGAPDPVG ALSWRPPQGPVSFPGGAIFS TATSLPSSPAAAAACAPLDSG ASENSRKPPSASSAPALARE C



Western blot analysis of lysates from mouse kidney, using MEX3D Rabbit polyclonal antibody (STJ119422) at 1:1000 dilution. Secondary antibody: HRP Goat Anti-Rabbit IgG (H+L) (STJ5000858) at 1:10000 dilution. Lysates/proteins: 25 Mu g per lane. Blocking buffer: 3% nonfat dry milk in TBST. Detection: ECL Basic Kit. Exposure time: 60s.

This product is suitable for in-vitro studies under the RESEARCH USE ONLY [RUO] licence. This product must not be used as for diagnostic or other medical purposes.
St John's Laboratory Ltd, Knowledge Dock Business Centre, University Way, London, E16 2RD | Tel: 0208 223 3081