

Anti-BBC3 antibody (50-131) (STJ119319)

STJ119319

GENERAL INFORMATION

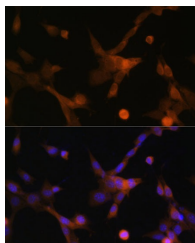
Product Type	Primary antibodies
Short Description	
Applications	WB/IHC-P/IF/ICC/ELISA
Host/Source	Rabbit
Reactivity	Human/Mouse/Rat

PRODUCT PROPERTIES

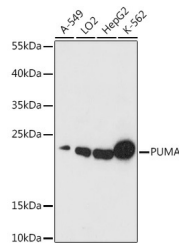
Clonality	Polyclonal
Clone ID	
Concentration	Lot specific
Conjugation	Unconjugated
Purification	Affinity purification
Dilution Range	WB:1:500-1:2000 IHC-P:1:50-1:100 IF/ICC:1:50-1:100 ELISA:Recommended starting concentration is 1 µg/mL. Please optimize the concentration based on your specific assay requirements.
Formulation	PBS with 0.01% Thimerosal, 50% Glycerol, pH 7.3.
Isotype	IgG
Storage Instruction	Store at -20°C for up to 1 year from the date of receipt, and avoid repeat freeze-thaw cycles.

TARGET INFORMATION

Gene ID	27113
Gene Symbol	BBC3 BBC3
Uniprot ID	BBC3B_HUMAN BBC3_HUMAN
Immunogen	50-131
Immunogen Region	
Specificity	A synthetic peptide corresponding to a sequence within amino acids 50-131 of human PUMA (NP_001120713.1).
Immunogen Sequence	PGALAGGPTQAAPGVRGEEE QWAREIGAQLRRMADDLNAQ YERRRQEEQQRHRPSPWRVL YNLIMGLLPLPRGHRAPEME PN



Immunofluorescence analysis of NIH-3T3 cells using PUMA Rabbit polyclonal antibody (STJ119319) at dilution of 1:100 (40x lens). Secondary antibody: Cy3 Goat Anti-Rabbit IgG (H+L) at 1:500 dilution. Blue: DAPI for nuclear staining.



Western blot analysis of various lysates using PUMA Rabbit polyclonal antibody (STJ119319) at 1:1000 dilution. Secondary antibody: HRP Goat Anti-Rabbit IgG (H+L) (STJ5000856) at 1:10000 dilution. Lysates/proteins: 25 µg per lane. Blocking buffer: 3% nonfat dry milk in TBST. Detection: ECL Basic Kit. Exposure time: 30s.

This product is suitable for in-vitro studies under the RESEARCH USE ONLY [RUO] licence. This product must not be used as for diagnostic or other medical purposes.

St John's Laboratory Ltd, Knowledge Dock Business Centre, University Way, London, E16 2RD | Tel: 0208 223 3081