

Anti-TAX1BP1 antibody (709-789) (STJ119281)

STJ119281

GENERAL INFORMATION

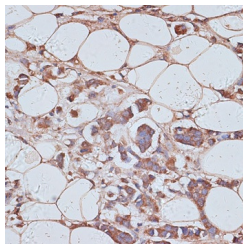
Product Type	Primary antibodies
Short Description	
Applications	IHC-P/ELISA
Host/Source	Rabbit
Reactivity	Human/Rat

PRODUCT PROPERTIES

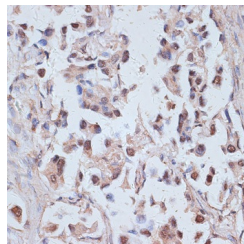
Clonality	Polyclonal
Clone ID	
Concentration	Lot specific
Conjugation	Unconjugated
Purification	Affinity purification
Dilution Range	IHC-P:1:50-1:200 ELISA:Recommended starting concentration is 1 µg/mL. Please optimize the concentration based on your specific assay requirements.
Formulation	PBS with 0.01% Thimerosal, 50% Glycerol, pH 7.3.
Isotype	IgG
Storage	Store at -20°C for up to 1 year from the date of receipt, and avoid repeat freeze-thaw cycles.
Instruction	

TARGET INFORMATION

Gene ID	8887
Gene Symbol	TAX1BP1
Uniprot ID	TAXB1_HUMAN
Immunogen	
Immunogen Region	709-789
Specificity	Recombinant fusion protein containing a sequence corresponding to amino acids 709-789 of human TRAF6BP/TRAF6BP/TAX1BP1 (NP_006015.4).
Immunogen Sequence	QHLRGHGTGFCFDSSFDVHK KCPLCELMFPNPDQSKFEE HVESHWKVCPMCSEQFPPDY DQQVFERHVQTHFDQNVNLF D



Immunohistochemistry analysis of TRAF6BP/TAX1BP1 in paraffin-embedded human breast cancer using TRAF6BP/TAX1BP1 Rabbit polyclonal antibody (STJ119281) at dilution of 1:100 (40x lens). Perform microwave antigen retrieval with 10 mM PBS buffer pH 7.2 before commencing with immunohistochemistry staining protocol.



Immunohistochemistry analysis of TRAF6BP/TAX1BP1 in paraffin-embedded human lung cancer using TRAF6BP/TAX1BP1 Rabbit polyclonal antibody (STJ119281) at dilution of 1:100 (40x lens). Perform microwave antigen retrieval with 10 mM PBS buffer pH 7.2 before commencing with immunohistochemistry staining protocol.