

Anti-NR1I2 antibody (135-230) (STJ119280)

STJ119280

GENERAL INFORMATION

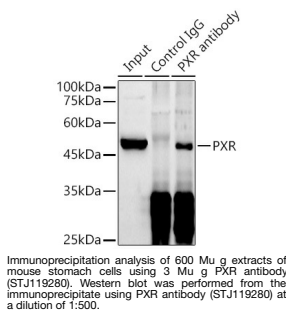
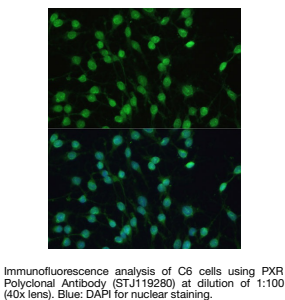
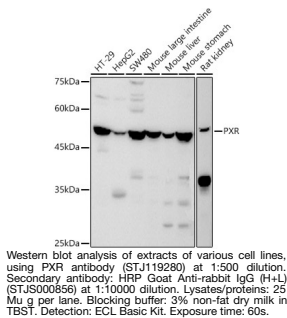
Product Type	Primary antibodies
Short Description	
Applications	WB/IF/ICC/IP/ELISA
Host/Source	Rabbit
Reactivity	Human/Mouse/Rat

PRODUCT PROPERTIES

Clonality	Polyclonal
Clone ID	
Concentration	Lot specific
Conjugation	Unconjugated
Purification	Affinity purification
Dilution Range	WB:1:100-1:500 IF/ICC:1:50-1:200 IP:0.5 Mu g-4 Mu g antibody for 400 Mu g-600 Mu g extracts of whole cells ELISA:Recommended starting concentration is 1 Mu g/mL. Please optimize the concentration based on your specific assay requirements.
Formulation	PBS with 0.05% Proclin300, 50% Glycerol, pH 7.3.
Isotype	IgG
Storage Instruction	Store at -20°C for up to 1 year from the date of receipt, and avoid repeat freeze-thaw cycles.

TARGET INFORMATION

Gene ID	8856
Gene Symbol	NR1I2
Uniprot ID	NR1I2_HUMAN
Immunogen	
Immunogen Region	135-230
Specificity	Recombinant fusion protein containing a sequence corresponding to amino acids 135-230 of human PXR (NP_003880.3).
Immunogen Sequence	TQPLGVQGLTEEQRMIREL MDAQMKTFDITFSHFKNFRL PGLSSGCPELSQLAPSRE EAAKWSQVRKDLCSLKVSLQ LRGEDGSWWNYKPPAD



This product is suitable for in-vitro studies under the RESEARCH USE ONLY [RUO] licence. This product must not be used as for diagnostic or other medical purposes.
St John's Laboratory Ltd, Knowledge Dock Business Centre, University Way, London, E16 2RD | Tel: 0208 223 3081