

Anti-CADPS antibody (1020-1100) (STJ119275)

STJ119275

GENERAL INFORMATION

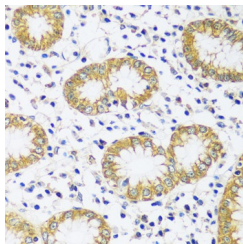
Product Type	Primary antibodies
Short Description	
Applications	IHC-P/ELISA
Host/Source	Rabbit
Reactivity	Human

PRODUCT PROPERTIES

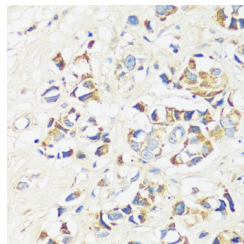
Clonality	Polyclonal
Clone ID	
Concentration	Lot specific
Conjugation	Unconjugated
Purification	Affinity purification
Dilution Range	IHC-P:1:50-1:200 ELISA:Recommended starting concentration is 1 µg/mL. Please optimize the concentration based on your specific assay requirements.
Formulation	PBS with 0.01% Thimerosal, 50% Glycerol, pH 7.3.
Isotype	IgG
Storage Instruction	Store at -20°C for up to 1 year from the date of receipt, and avoid repeat freeze-thaw cycles.

TARGET INFORMATION

Gene ID	8618
Gene Symbol	CADPS
Uniprot ID	CAPS1_HUMAN
Immunogen	
Immunogen Region	1020-1100
Specificity	Recombinant fusion protein containing a sequence corresponding to amino acids 1020-1100 of human CADPS (NP_899630.1).
Immunogen Sequence	MASDMIESCVRTRIAFEVK LQKTSRSTDFRVPQSICTMF NVMVDAKAQSTKLCSMEMGQ EHGYHSKIDELIEETVKEMI T



Immunohistochemistry analysis of CADPS in paraffin-embedded human stomach using CADPS Rabbit polyclonal antibody (STJ119275) at dilution of 1:100 (40x lens). Perform microwave antigen retrieval with 10 mM PBS buffer pH 7.2 before commencing with immunohistochemistry staining protocol.



Immunohistochemistry analysis of CADPS in paraffin-embedded human breast cancer using CADPS Rabbit polyclonal antibody (STJ119275) at dilution of 1:100 (40x lens). Perform microwave antigen retrieval with 10 mM PBS buffer pH 7.2 before commencing with immunohistochemistry staining protocol.