

Anti-MAG antibody (20-220) (STJ119230)

STJ119230

GENERAL INFORMATION

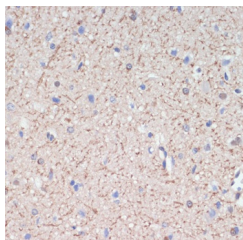
Product Type	Primary antibodies
Short Description	
Applications	WB/IHC-P/ELISA
Host/Source	Rabbit
Reactivity	Human/Mouse/Rat

PRODUCT PROPERTIES

Clonality	Polyclonal
Clone ID	
Concentration	Lot specific
Conjugation	Unconjugated
Purification	Affinity purification
Dilution	WB:1:500-1:2000
Range	IHC-P:1:50-1:200
	ELISA:Recommended starting concentration is 1 μ g/mL. Please optimize the concentration based on your specific assay requirements.
Formulation	PBS with 0.02% Sodium Azide, 50% Glycerol, pH 7.3.
Isotype	IgG
Storage Instruction	Store at -20°C for up to 1 year from the date of receipt, and avoid repeat freeze-thaw cycles.

TARGET INFORMATION

Gene ID	4099
Gene Symbol	MAG
Uniprot ID	MAG_HUMAN
Immunogen	
Immunogen Region	20-220
Specificity	Recombinant fusion protein containing a sequence corresponding to amino acids 20-220 of human MAG (P20916).
Immunogen Sequence	GHWGAWMPSSISAFEGTCVS IPCRFDFPDELPAVWHGVW YFNSPYPKNYPPWFKSRTQ VVHESFQGRSRLLDLGLRN CTLLLSNVSPELGGKYYFRG DLGGYNQYTFSEHSVLDIVN TPNIVPPEVAGTEVEVSC MVPDNCPELRPELSWLGHEG LGEPAVLGRLREDEGTWVQV SLLHFVPTREANGHRLGCQA S



Immunohistochemistry analysis of paraffin-embedded rat brain using MAG antibody (STJ119230) at dilution of 1:200 (40x lens). Perform microwave antigen retrieval with 10 mM PBS buffer pH 7.2 before commencing with immunohistochemistry staining protocol.