

Anti-IRS1 antibody (1043-1242) (STJ119225)

STJ119225

GENERAL INFORMATION

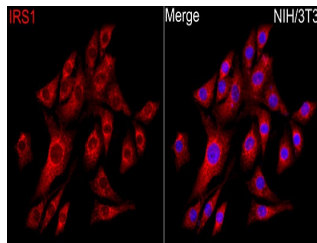
Product Type	Primary antibodies
Short Description	
Applications	WB/IHC-P/IF/ICC/ELISA
Host/Source	Rabbit
Reactivity	Human/Mouse/Rat

PRODUCT PROPERTIES

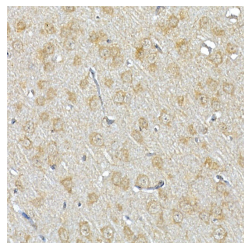
Clonality	Polyclonal
Clone ID	
Concentration	Lot specific
Conjugation	Unconjugated
Purification	Affinity purification
Dilution Range	WB:1:500-1:1000 IHC-P:1:50-1:200 IF/ICC:1:50-1:100 ELISA:Recommended starting concentration is 1 µg/mL. Please optimize the concentration based on your specific assay requirements.
Formulation	PBS with 0.05% Proclin300, 50% Glycerol, pH 7.3.
Isotype	IgG
Storage	Store at -20°C for up to 1 year from the date of receipt, and avoid repeat freeze-thaw cycles.
Instruction	

TARGET INFORMATION

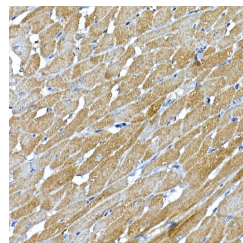
Gene ID	3667
Gene Symbol	IRS1
Uniprot ID	IRS1_HUMAN
Immunogen	
Region	1043-1242
Specificity	Recombinant fusion protein containing a sequence corresponding to amino acids 1043-1242 of human IRS1 (NP_005535.1).
Immunogen Sequence	SPTGPGGAAELAAHSSLLGG PQGPGGMSAFTRVNLSPNRN QSAKVIRADPQGCRRRHSSE TFSSTPSATRVGNTVPFGAG AAVGGGGSSSSSEDVKRHS SASFENWLRPGELGGAPKE PAKLCGAAGGLENLNYIDL DLVKDFKQCPQECTPEPQPP PPPPHQLPLGSGESSSTRRS SEDLSAYASISFQKQPEDRQ



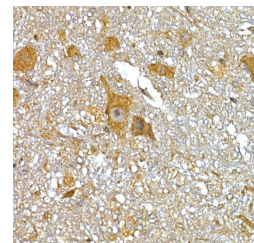
Immunofluorescence analysis of NIH/3T3 cells using IRS1 Rabbit polyclonal antibody (STJ119225) at dilution of 1:100 (40x lens). Secondary antibody: Cy3 Goat Anti-Rabbit IgG (H+L) at 1:500 dilution. Blue: DAPI for nuclear staining.



Immunohistochemistry analysis of IRS1 in paraffin-embedded rat brain tissue using IRS1 Rabbit polyclonal antibody (STJ119225) at a dilution of 1:100 (40x lens). High pressure antigen retrieval was performed with 0.01 M citrate buffer (pH 6.0) prior to immunohistochemistry staining.



Immunohistochemistry analysis of IRS1 in paraffin-embedded rat heart tissue using IRS1 Rabbit polyclonal antibody (STJ119225) at a dilution of 1:100 (40x lens). High pressure antigen retrieval was performed with 0.01 M citrate buffer (pH 6.0) prior to immunohistochemistry staining.



Immunohistochemistry analysis of IRS1 in paraffin-embedded mouse spinal cord tissue using IRS1 Rabbit polyclonal antibody (STJ119225) at a dilution of 1:100 (40x lens). High pressure antigen retrieval was performed with 0.01 M citrate buffer (pH 6.0) prior to immunohistochemistry staining.

This product is suitable for in-vitro studies under the RESEARCH USE ONLY [RUO] licence. This product must not be used as for diagnostic or other medical purposes.
St John's Laboratory Ltd, Knowledge Dock Business Centre, University Way, London, E16 2RD | Tel: 0208 223 3081