

Anti-CDK2 antibody (200-298) (STJ119215)

STJ119215

GENERAL INFORMATION

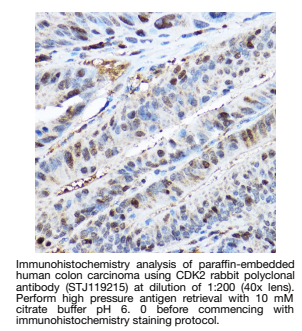
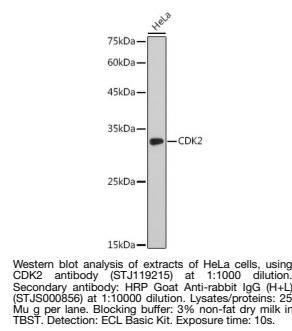
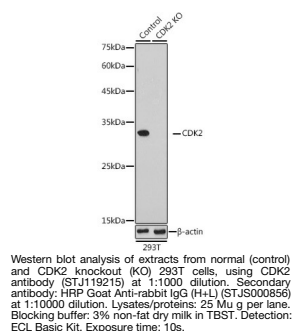
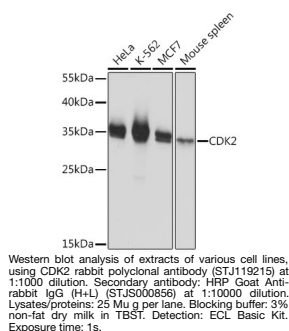
Product Type	Primary antibodies
Short Description	
Applications	WB/IHC-P/IF/ICC/IP/ELISA
Host/Source	Rabbit
Reactivity	Human/Mouse/Rat

PRODUCT PROPERTIES

Clonality	Polyclonal
Clone ID	
Concentration	Lot specific
Conjugation	Unconjugated
Purification	Affinity purification
Dilution Range	WB:1:500-1:1000 IHC-P:1:50-1:200 IF/CC:1:100-1:500 IP:0.5 Mu g-4 Mu g antibody for 200 Mu g-400 Mu g extracts of whole cells ELISA:Recommended starting concentration is 1 Mu g/mL. Please optimize the concentration based on your speci
Formulation	PBS with 0.01% Thimerosal, 50% Glycerol, pH 7.3.
Isotype	IgG
Storage Instruction	Store at -20°C for up to 1 year from the date of receipt, and avoid repeat freeze-thaw cycles.

TARGET INFORMATION

Gene ID	1017
Gene Symbol	CDK2
Uniprot ID	CDK2_HUMAN
Immunogen	
Immunogen Region	200-298
Specificity	A synthetic peptide corresponding to a sequence within amino acids 200-298 of human CDK2 (NP_001789.2). RALFPGDSEIDQLFRIFRTL GTPDEVVWPGVTSMPDYKPS FPKWARQDFSQVVPPLDEDG RSLLSQMLHYDPNKRISAKA
Immunogen Sequence	ALAHPPFQDVTKPVPHLRL



This product is suitable for in-vitro studies under the RESEARCH USE ONLY [RUO] licence. This product must not be used as for diagnostic or other medical purposes.
St John's Laboratory Ltd, Knowledge Dock Business Centre, University Way, London, E16 2RD | Tel: 0208 223 3081