

Anti-GAB1 antibody (1-150) (STJ119204)

STJ119204

GENERAL INFORMATION

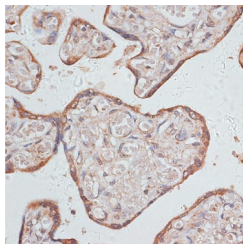
Product Type	Primary antibodies
Short Description	
Applications	IHC-P/ELISA
Host/Source	Rabbit
Reactivity	Human

PRODUCT PROPERTIES

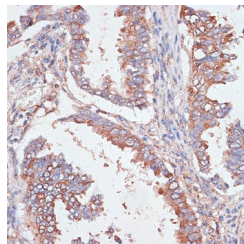
Clonality	Polyclonal
Clone ID	
Concentration	Lot specific
Conjugation	Unconjugated
Purification	Affinity purification
Dilution	IHC-P:1:50-1:200
Range	ELISA:Recommended starting concentration is 1 µg/mL. Please optimize the concentration based on your specific assay requirements.
Formulation	PBS with 0.01% Thimerosal, 50% Glycerol, pH 7.3.
Isotype	IgG
Storage	Store at -20°C for up to 1 year from the date of receipt, and avoid repeat freeze-thaw cycles.
Instruction	

TARGET INFORMATION

Gene ID	2549
Gene Symbol	GAB1
Uniprot ID	GAB1_HUMAN
Immunogen	
Immunogen Region	1-150
Specificity	Recombinant fusion protein containing a sequence corresponding to amino acids 1-150 of human GAB1 (NP_997006.1).
Immunogen Sequence	MSGGEVCSGWLKSPPEKK LKRYAWKRRWFVLRSGRLTG DPDLVEYYKNDHAKKPIRII DLNLCQQVDAGLTFNKKEFE NSYIFDINTIDRIFYLVADS EEEMNKWVRCIDICGFNPT EEDPVKPPGSSLQAPADLPL AINTAPPSTQ



Immunohistochemistry analysis of GAB1 in paraffin-embedded human placenta using GAB1 Rabbit polyclonal antibody (STJ119204) at dilution of 1:100 (40x lens). Perform microwave antigen retrieval with 10 mM PBS buffer pH 7.2 before commencing with immunohistochemistry staining protocol.



Immunohistochemistry analysis of GAB1 in paraffin-embedded human lung cancer using GAB1 Rabbit polyclonal antibody (STJ119204) at dilution of 1:100 (40x lens). Perform microwave antigen retrieval with 10 mM PBS buffer pH 7.2 before commencing with immunohistochemistry staining protocol.