

Anti-EZH2 antibody (158-261) (STJ119200)
STJ119200

GENERAL INFORMATION

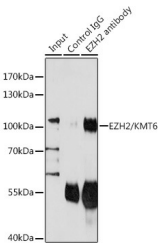
Product Type	Primary antibodies
Short Description	
Applications	WB/IP/ELISA
Host/Source	Rabbit
Reactivity	Human/Mouse

PRODUCT PROPERTIES

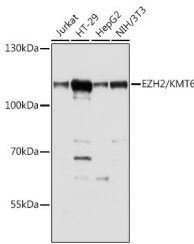
Clonality	Polyclonal
Clone ID	
Concentration	Lot specific
Conjugation	Unconjugated
Purification	Affinity purification
Dilution Range	WB:1:500-1:2000 IP:0.5 Mu g-4 Mu g antibody for 200 Mu g-400 Mu g extracts of whole cells ELISA:Recommended starting concentration is 1 Mu g/mL. Please optimize the concentration based on your specific assay requirements.
Formulation	PBS with 0.09% Sodium Azide, 50% Glycerol, pH 7.3.
Isotype	IgG
Storage	Store at -20°C for up to 1 year from the date of receipt, and avoid repeat freeze-thaw cycles.
Instruction	

TARGET INFORMATION

Gene ID	2146
Gene Symbol	EZH2
Uniprot ID	EZH2_HUMAN
Immunogen	
Immunogen Region	158-261
Specificity	Recombinant fusion protein containing a sequence corresponding to amino acids 158-261 of EZH2/KMT6 (NP_001190176.1). HGDRECGFINDEIFVELVNA LGQYNDDDDDDGDDPEERE EKQKDLEDHRDDKESRPPRK FPSDKIFEAISSMFPDKGTA
Immunogen Sequence	EELKEKYKELTEQQLPGALP PECT



Immunoprecipitation analysis of 200 Mu g extracts of Jurkat cells using 3 Mu g EZH2/KMT6 antibody (STJ119200). Western blot was performed from the immunoprecipitate using EZH2/KMT6 antibody (STJ119200) at a dilution of 1:1000.



Western blot analysis of various lysates using EZH2/KMT6 Rabbit polyclonal antibody (STJ119200) at 1:1000 dilution. Secondary antibody: HRP Goat Anti-Rabbit IgG (H+L) (STJS000856) at 1:10000 dilution. Lysates/proteins: 25 Mu g per lane. Blocking buffer: 3% nonfat dry milk in TBS-T. Detection: ECL Basic Kit. Exposure time: 90s.

This product is suitable for in-vitro studies under the RESEARCH USE ONLY [RUO] licence. This product must not be used as for diagnostic or other medical purposes.
St John's Laboratory Ltd, Knowledge Dock Business Centre, University Way, London, E16 2RD | Tel: 0208 223 3081