

Anti-CTBP2 antibody (C-Term) (STJ119192)

STJ119192

GENERAL INFORMATION

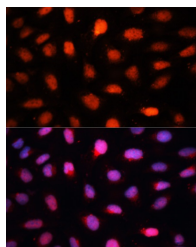
| | |
|--------------------------|--------------------|
| Product Type | Primary antibodies |
| Short Description | |
| Applications | WB/IF/ICC/ELISA |
| Host/Source | Rabbit |
| Reactivity | Human/Mouse/Rat |

PRODUCT PROPERTIES

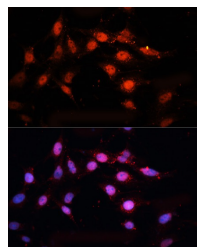
| | |
|----------------------------|--|
| Clonality | Polyclonal |
| Clone ID | |
| Concentration | Lot specific |
| Conjugation | Unconjugated |
| Purification | Affinity purification |
| Dilution | WB:1:500-1:2000 |
| Range | IF/CC:1:50-1:200 |
| | ELISA:Recommended starting concentration is 1 μ g/mL. Please optimize the concentration based on your specific assay requirements. |
| Formulation | PBS with 0.01% Thimerosal, 50% Glycerol, pH 7.3. |
| Isotype | IgG |
| Storage Instruction | Store at -20°C for up to 1 year from the date of receipt, and avoid repeat freeze-thaw cycles. |

TARGET INFORMATION

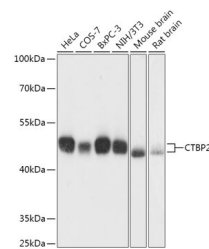
| | |
|---------------------------|---|
| Gene ID | 1488 |
| Gene Symbol | CTBP2 |
| Uniprot ID | CTBP2_HUMAN |
| Immunogen | |
| Immunogen Region | C-Term |
| Specificity | A synthetic peptide corresponding to a sequence within amino acids 300 to the C-terminus of human CTBP2 (NP_001320.1). |
| Immunogen Sequence | SEPFSAQGPKDAPNLICTHTAWYSEQASLEMREAAAT EIRRAITGRIPESLRNCVNK EFFVTSAPWSVIDQQAHPPE LNGATYRYPPIGVVAPGGL PAAMEGIIPGGIPVTHNLPT VAHPSQAPSPNQPTKHGDNR EHPNEQ |



Immunofluorescence analysis of U2OS cells using CTBP2 Rabbit polyclonal antibody (STJ119192) at dilution of 1:100. Secondary antibody: Cy3 Goat Anti-Rabbit IgG (H+L) at 1:500 dilution. Blue: DAPI for nuclear staining.



Immunofluorescence analysis of C6 cells using CTBP2 Rabbit polyclonal antibody (STJ119192) at dilution of 1:100. Secondary antibody: Cy3 Goat Anti-Rabbit IgG (H+L) at 1:500 dilution. Blue: DAPI for nuclear staining.



Western blot analysis of various lysates using CTBP2 Rabbit polyclonal antibody (STJ119192) at 1:1000 dilution. Secondary antibody: HRP-Goat Anti-Rabbit IgG (H+L) (STJ5000856) at 1:10000 dilution. Lysates/proteins: 25 μ g per lane. Blocking buffer: 3% nonfat dry milk in TBST. Detection: ECL Basic Kit. Exposure time: 10s.