

Anti-CD44 antibody (148-742) (STJ119186)

STJ119186

GENERAL INFORMATION

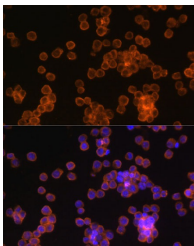
Product Type	Primary antibodies
Short Description	
Applications	WB/IHC-P/IF/ICC/ELISA
Host/Source	Rabbit
Reactivity	Human/Mouse/Rat

PRODUCT PROPERTIES

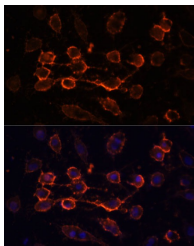
Clonality	Polyclonal
Clone ID	
Concentration	Lot specific
Conjugation	Unconjugated
Purification	Affinity purification
Dilution Range	WB:1:500-1:2000 IHC-P:1:50-1:200 IF/ICC:1:50-1:200 ELISA:Recommended starting concentration is 1 μ g/mL. Please optimize the concentration based on your specific assay requirements.
Formulation	PBS with 0.02% Sodium Azide, 50% Glycerol, pH 7.3.
Isotype	IgG
Storage Instruction	Store at -20°C for up to 1 year from the date of receipt, and avoid repeat freeze-thaw cycles.

TARGET INFORMATION

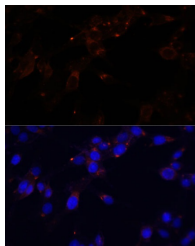
Gene ID	960
Gene Symbol	CD44
Uniprot ID	CD44_HUMAN
Immunogen	
Immunogen Region	148-742
Specificity	Recombinant fusion protein containing a sequence corresponding to amino acids 148-247 of human CD44 (NP_000601.3).
Immunogen Sequence	VNRDGTTRYVQKGEYRTNPED IYPSNPTDDVSSGSSSERS STSGGYIFYTFSTVHPIPE DSPWITDSTDRIPTATLMST SATATETATKRQETWDWFSW



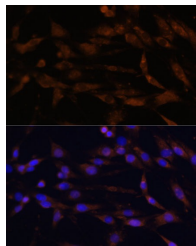
Immunofluorescence analysis of Raw264.7 cells using CD44 antibody (STJ119186) at dilution of 1:100. Blue: DAPI for nuclear staining.



Immunofluorescence analysis of HUVEC cells using CD44 antibody (STJ119186) at dilution of 1:100. Blue: DAPI for nuclear staining.



Immunofluorescence analysis of HeLa cells using CD44 antibody (STJ119186) at dilution of 1:100. Blue: DAPI for nuclear staining.



Immunofluorescence analysis of C6 cells using CD44 antibody (STJ119186) at dilution of 1:100. Blue: DAPI for nuclear staining.

This product is suitable for in-vitro studies under the RESEARCH USE ONLY [RUO] licence. This product must not be used as for diagnostic or other medical purposes.
St John's Laboratory Ltd, Knowledge Dock Business Centre, University Way, London, E16 2RD | Tel: 0208 223 3081