

Anti-CD86 antibody (25-329) (STJ119185)
STJ119185

GENERAL INFORMATION

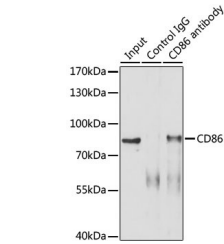
Product Type	Primary antibodies
Short Description	
Applications	WB/IF/ICC/IP/ELISA
Host/Source	Rabbit
Reactivity	Human/Mouse/Rat

PRODUCT PROPERTIES

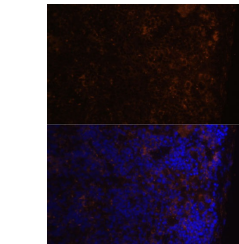
Clonality	Polyclonal
Clone ID	
Concentration	Lot specific
Conjugation	Unconjugated
Purification	Affinity purification
Dilution Range	WB:1:100-1:500 IF/ICC:1:50-1:200 IP:0.5 Mu g-4 Mu g antibody for 200 Mu g-400 Mu g extracts of whole cells ELISA:Recommended starting concentration is 1 Mu g/mL. Please optimize the concentration based on your specific assay requirements.
Formulation	PBS with 0.05% Proclin300, 50% Glycerol, pH 7.3.
Isotype	IgG
Storage	Store at -20°C for up to 1 year from the date of receipt, and avoid repeat freeze-thaw cycles.
Instruction	

TARGET INFORMATION

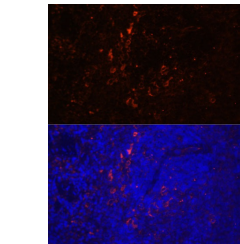
Gene ID	942
Gene Symbol	CD86
Uniprot ID	CD86_HUMAN
Immunogen	
Immunogen Region	25-329
Specificity	Recombinant fusion protein containing a sequence corresponding to amino acids 25-133 of human CD86 (NP_787058.4).
Immunogen Sequence	PLKIQAYFNETADLPQCFAN SQNQSLSELVFWQDQENLV LNEVYLGKEKFDVSHSKYMG RTSFSDSDSWTLRLHNLQIKD KGLYQCIHHKKPTGMIRIH QMNSELSVL



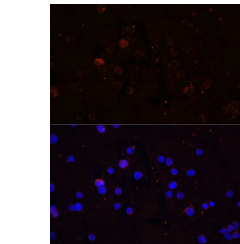
Immunoprecipitation analysis of 200 Mu g extracts of Jurkat cells using 3 Mu g CD86 antibody (STJ119185). Western blot was performed from the immunoprecipitate using CD86 antibody (STJ119185) at a dilution of 1:1000.



Immunofluorescence analysis of paraffin-embedded mouse spleen using CD86 Rabbit polyclonal antibody (STJ119185) at dilution of 1:100 (40x lens). Secondary antibody: Cy3 Goat Anti-Rabbit IgG (H+L) at 1:500 dilution. Blue: DAPI for nuclear staining.



Immunofluorescence analysis of paraffin-embedded rat spleen using CD86 Rabbit polyclonal antibody (STJ119185) at dilution of 1:100 (40x lens). Secondary antibody: Cy3 Goat Anti-Rabbit IgG (H+L) at 1:500 dilution. Blue: DAPI for nuclear staining.



Immunofluorescence analysis of THP-1 cells using CD86 Rabbit polyclonal antibody (STJ119185) at dilution of 1:100 (40x lens). Secondary antibody: Cy3 Goat Anti-Rabbit IgG (H+L) at 1:500 dilution. Blue: DAPI for nuclear staining.

This product is suitable for in-vitro studies under the RESEARCH USE ONLY [RUO] licence. This product must not be used as for diagnostic or other medical purposes.
St John's Laboratory Ltd, Knowledge Dock Business Centre, University Way, London, E16 2RD | Tel: 0208 223 3081