

**Anti-CCNB1 antibody (350-433) (STJ119184)**  
STJ119184

**GENERAL INFORMATION**

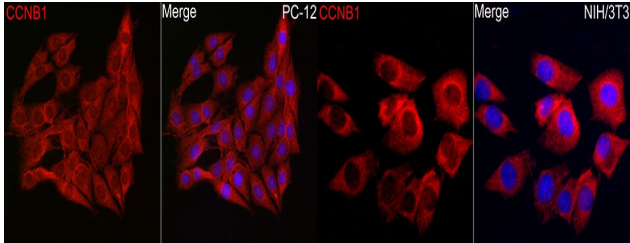
<b>Product Type</b>	Primary antibodies
<b>Short Description</b>	
<b>Applications</b>	WB/IHC-P/IF/ICC/ELISA
<b>Host/Source</b>	Rabbit
<b>Reactivity</b>	Human/Mouse/Rat

**PRODUCT PROPERTIES**

<b>Clonality</b>	Polyclonal
<b>Clone ID</b>	
<b>Concentration</b>	Lot specific
<b>Conjugation</b>	Unconjugated
<b>Purification</b>	Affinity purification
<b>Dilution Range</b>	WB:1:500-1:1000 IHC-P:1:50-1:200 IF/ICC:1:50-1:200 ELISA:Recommended starting concentration is 1 µg/mL. Please optimize the concentration based on your specific assay requirements.
<b>Formulation</b>	PBS with 0.01% Thimerosal, 50% Glycerol, pH 7.3.
<b>Isotype</b>	IgG
<b>Storage Instruction</b>	Store at -20°C for up to 1 year from the date of receipt, and avoid repeat freeze-thaw cycles.

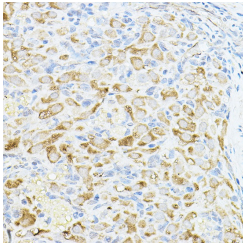
**TARGET INFORMATION**

<b>Gene ID</b>	891
<b>Gene Symbol</b>	CCNB1
<b>Uniprot ID</b>	CCNB1_HUMAN
<b>Immunogen</b>	
<b>Immunogen Region</b>	350-433
<b>Specificity</b>	A synthetic peptide corresponding to a sequence within amino acids 350-433 of human CCNB1 (NP_114172.1).
<b>Immunogen Sequence</b>	CLALKILDNGEWTPTLQHYL SYTEESLLPVMQHLAKNVVM VNQGLTKHMTVKNKYATSKH AKISTLPQLNSALVQDLAKA VAKV

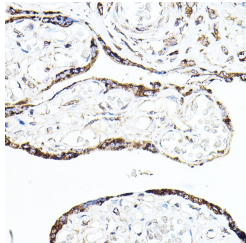


Immunofluorescence analysis of PC-12 cells using [KO Validated] Cyclin B1 Rabbit polyclonal antibody (STJ119184) at a dilution of 1:100 (40x lens). Secondary antibody: Cy3 Goat Anti-Rabbit IgG (H+L) at 1:500 dilution. Blue: DAPI for nuclear staining.

Immunofluorescence analysis of NIH/3T3 cells using [KO Validated] Cyclin B1 Rabbit polyclonal antibody (STJ119184) at a dilution of 1:100 (40x lens). Secondary antibody: Cy3 Goat Anti-Rabbit IgG (H+L) at 1:500 dilution. Blue: DAPI for nuclear staining.



Immunohistochemistry analysis of Cyclin B1 in paraffin-embedded rat ovary tissue using [KO Validated] Cyclin B1 Rabbit polyclonal antibody (STJ119184) at a dilution of 1:150 (40x lens). High pressure antigen retrieval was performed with 0.01 M citrate buffer (pH 6.0) prior to immunohistochemistry staining.



Immunohistochemistry analysis of Cyclin B1 in paraffin-embedded human placenta tissue using [KO Validated] Cyclin B1 Rabbit polyclonal antibody (STJ119184) at a dilution of 1:150 (40x lens). High pressure antigen retrieval was performed with 0.01 M citrate buffer (pH 6.0) prior to immunohistochemistry staining.

This product is suitable for in-vitro studies under the RESEARCH USE ONLY [RUO] licence. This product must not be used as for diagnostic or other medical purposes.  
St John's Laboratory Ltd, Knowledge Dock Business Centre, University Way, London, E16 2RD | Tel: 0208 223 3081