

Anti-CAST antibody (406-695) (STJ119180)

STJ119180

GENERAL INFORMATION

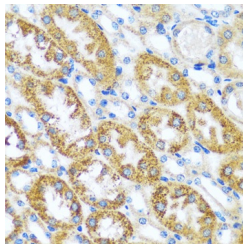
| | |
|--------------------------|--------------------|
| Product Type | Primary antibodies |
| Short Description | |
| Applications | IHC-P/ELISA |
| Host/Source | Rabbit |
| Reactivity | Human/Mouse |

PRODUCT PROPERTIES

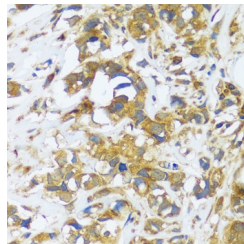
| | |
|----------------------|---|
| Clonality | Polyclonal |
| Clone ID | |
| Concentration | Lot specific |
| Conjugation | Unconjugated |
| Purification | Affinity purification |
| Dilution | IHC-P:1:50-1:200 |
| Range | ELISA:Recommended starting concentration is 1 µg/mL. Please optimize the concentration based on your specific assay requirements. |
| Formulation | PBS with 0.01% Thimerosal, 50% Glycerol, pH 7.3. |
| Isotype | IgG |
| Storage | Store at -20°C for up to 1 year from the date of receipt, and avoid repeat freeze-thaw cycles. |
| Instruction | |

TARGET INFORMATION

| | |
|---------------------------|--|
| Gene ID | 831 |
| Gene Symbol | CAST |
| Uniprot ID | ICAL_HUMAN |
| Immunogen | |
| Immunogen Region | 406-695 |
| Specificity | Recombinant fusion protein containing a sequence corresponding to amino acids 406-695 of human CAST (NP_001177371.1). |
| Immunogen Sequence | PPEPATLKGTVPDDAVEALA DSLGKKEADPEDGKPVMDKV KEKAKEEDREKLGEKEETIP PDYRLEEVKDKDGKPLLPKE SKEQLPPMSEDFLDALSED FSGPQNASSLKFEAKLAAA ISEVVSQTASTTQAGAPPR DTSQSDKDLDDALDKLSDSL GQRQPDNDENKPMEDKVKEK AKAHRDKLGERDDTIPPEY RHLLDNGQDKPVKPTKKS EDSKKPADDQDPIDALSGD |



Immunohistochemistry analysis of CAST in paraffin-embedded mouse kidney using CAST Rabbit polyclonal antibody (STJ119180) at dilution of 1:100 (40x lens). Perform microwave antigen retrieval with 10 mM PBS buffer pH 7.2 before commencing with immunohistochemistry staining protocol.



Immunohistochemistry analysis of CAST in paraffin-embedded human breast cancer using CAST Rabbit polyclonal antibody (STJ119180) at dilution of 1:100 (40x lens). Perform microwave antigen retrieval with 10 mM PBS buffer pH 7.2 before commencing with immunohistochemistry staining protocol.

This product is suitable for in-vitro studies under the RESEARCH USE ONLY [RUO] licence. This product must not be used as for diagnostic or other medical purposes.
St John's Laboratory Ltd, Knowledge Dock Business Centre, University Way, London, E16 2RD | Tel: 0208 223 3081