

Anti-ATP1B2 antibody (68-290) (STJ119173)

GENERAL INFORMATION

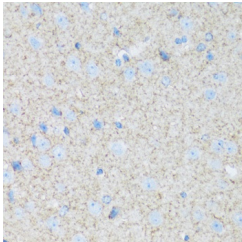
Product Type	Primary antibodies
Short Description	
Applications	IHC-P/ELISA
Host/Source	Rabbit
Reactivity	Mouse/Rat

PRODUCT PROPERTIES

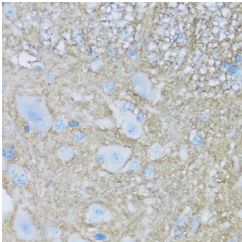
Clonality	Polyclonal
Clone ID	
Concentration	Lot specific
Conjugation	Unconjugated
Purification	Affinity purification
Dilution	IHC-P:1:50-1:200
Range	ELISA:Recommended starting concentration is 1 µg/mL. Please optimize the concentration based on your specific assay requirements.
Formulation	PBS with 0.02% Sodium Azide, 50% Glycerol, pH 7.3.
Isotype	IgG
Storage	Store at -20°C for up to 1 year from the date of receipt, and avoid repeat freeze-thaw cycles.
Instruction	

TARGET INFORMATION

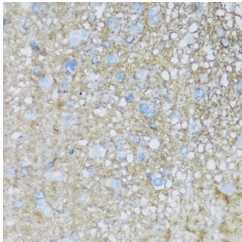
Gene ID	482
Gene Symbol	ATP1B2
Uniprot ID	AT1B2_HUMAN
Immunogen	
Immunogen Region	68-290
Specificity	Recombinant fusion protein containing a sequence corresponding to amino acids 68-290 of human ATP1B2 (NP_001669.3). DHTPKYQDRLATPGLMIRPK TENLDVIVNVSDTESWDQHV QKLNKFLEPYNDSIQAKND VCRPGRYEOPDNGVLNYPK RACQFNRTQLGNCSGIGDST HYGSTGQPCVFIKMNRVIN FYAGANQSMNVTCAGKRDED AENLGNFVMFPANGNIDLMY FPHYGKKFHVNYTQPLVAVK FLNVTPNVEVNVCRINAAN IATDDERDKFAGRVAFKLRI NKT
Immunogen Sequence	



Immunohistochemistry analysis of paraffin-embedded mouse brain using ATP1B2 antibody (STJ119173) at dilution of 1:100 (40x lens). Perform microwave antigen retrieval with 10 mM PBS buffer pH 7.2 before commencing with immunohistochemistry staining protocol.



Immunohistochemistry analysis of paraffin-embedded mouse spinal cord using ATP1B2 antibody (STJ119173) at dilution of 1:100 (40x lens). Perform microwave antigen retrieval with 10 mM PBS buffer pH 7.2 before commencing with immunohistochemistry staining protocol.



Immunohistochemistry analysis of paraffin-embedded rat brain using ATP1B2 antibody (STJ119173) at dilution of 1:100 (40x lens). Perform microwave antigen retrieval with 10 mM PBS buffer pH 7.2 before commencing with immunohistochemistry staining protocol.

This product is suitable for in-vitro studies under the RESEARCH USE ONLY [RUO] licence. This product must not be used as for diagnostic or other medical purposes.
St John's Laboratory Ltd, Knowledge Dock Business Centre, University Way, London, E16 2RD | Tel: 0208 223 3081