

**Anti-SRSF7 antibody (60-120) (STJ119149)**  
STJ119149

**GENERAL INFORMATION**

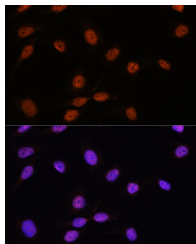
<b>Product Type</b>	Primary antibodies
<b>Short Description</b>	
<b>Applications</b>	WB/IHC-P/IF/ICC/ELISA
<b>Host/Source</b>	Rabbit
<b>Reactivity</b>	Human/Mouse/Rat

**PRODUCT PROPERTIES**

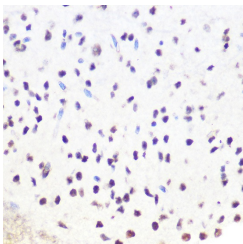
<b>Clonality</b>	Polyclonal
<b>Clone ID</b>	
<b>Concentration</b>	Lot specific
<b>Conjugation</b>	Unconjugated
<b>Purification</b>	Affinity purification
<b>Dilution Range</b>	WB:1:500-1:1000 IHC-P:1:50-1:200 IF/ICC:1:50-1:100 ELISA:Recommended starting concentration is 1 µg/mL. Please optimize the concentration based on your specific assay requirements.
<b>Formulation</b>	PBS with 0.01% Thimerosal, 50% Glycerol, pH 7.3.
<b>Isotype</b>	IgG
<b>Storage Instruction</b>	Store at -20°C for up to 1 year from the date of receipt, and avoid repeat freeze-thaw cycles.

**TARGET INFORMATION**

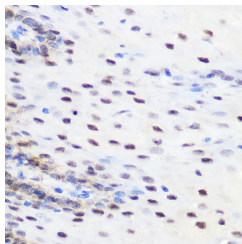
<b>Gene ID</b>	6432
<b>Gene Symbol</b>	SRSF7
<b>Uniprot ID</b>	SRSF7_HUMAN
<b>Immunogen</b>	
<b>Immunogen Region</b>	60-120
<b>Specificity</b>	Recombinant fusion protein containing a sequence corresponding to amino acids 60-120 of human SRSF7 (NP_001026854).
<b>Immunogen Sequence</b>	AEDAVRGLDGKVICGSRVRV ELSTGMPPRRSRFDRPPARRP FDPNDRCYECGEKGHYAYDC H



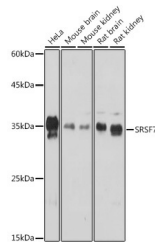
Immunofluorescence analysis of U-2 OS cells using SRSF7 Rabbit polyclonal antibody (STJ119149) at dilution of 1:100. Secondary antibody: Cy3 Goat Anti-Rabbit IgG (H+L) at 1:500 dilution. Blue: DAPI for nuclear staining.



Immunohistochemistry analysis of SRSF7 in paraffin-embedded mouse spinal cord using SRSF7 Rabbit polyclonal antibody (STJ119149) at dilution of 1:100 (40x lens). Perform microwave antigen retrieval with 10 mM Tris/EDTA buffer pH 9.0 before commencing with immunohistochemistry staining protocol.



Immunohistochemistry analysis of SRSF7 in paraffin-embedded human esophageal using SRSF7 Rabbit polyclonal antibody (STJ119149) at dilution of 1:100 (40x lens). Perform microwave antigen retrieval with 10 mM Tris/EDTA buffer pH 9.0 before commencing with immunohistochemistry staining protocol.



Western blot analysis of various lysates using SRSF7 Rabbit polyclonal antibody (STJ119149) at 1:1000 dilution. Secondary antibody: HRP Goat Anti-Rabbit IgG (H+L) (STJ5000856) at 1:10000 dilution. Lysates/proteins: 25 µg per lane. Blocking buffer: 3% nonfat dry milk in TBST. Detection: ECL Basic Kit. Exposure time: 60s.