

**Anti-MAPK1/MAPK3 antibody (200-300) (STJ119147)**  
STJ119147

**GENERAL INFORMATION**

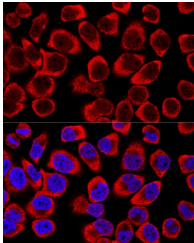
<b>Product Type</b>	Primary antibodies
<b>Short Description</b>	
<b>Applications</b>	WB/IF/ICC/ELISA
<b>Host/Source</b>	Rabbit
<b>Reactivity</b>	Human/Mouse/Rat

**PRODUCT PROPERTIES**

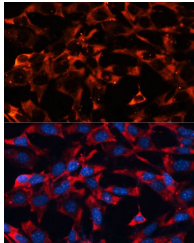
<b>Clonality</b>	Polyclonal
<b>Clone ID</b>	
<b>Concentration</b>	Lot specific
<b>Conjugation</b>	Unconjugated
<b>Purification</b>	Affinity purification
<b>Dilution Range</b>	WB:1:1000-1:2000 IF/ICC:1:100-1:200 ELISA:Recommended starting concentration is 1 Mu g/mL. Please optimize the concentration based on your specific assay requirements.
<b>Formulation</b>	PBS with 0.01% Thimerosal, 50% Glycerol, pH 7.3.
<b>Isotype</b>	IgG
<b>Storage Instruction</b>	Store at -20°C for up to 1 year from the date of receipt, and avoid repeat freeze-thaw cycles.

**TARGET INFORMATION**

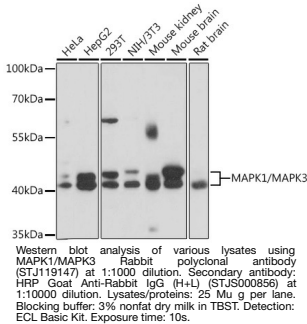
<b>Gene ID</b>	5595 5594
<b>Gene Symbol</b>	MAPK3 MAPK1
<b>Uniprot ID</b>	MK03_HUMAN MK01_HUMAN
<b>Immunogen</b>	
<b>Immunogen Region</b>	200-300
<b>Specificity</b>	A synthetic peptide corresponding to a sequence within amino acids 200-300 of human MAPK1/MAPK3 (NP_620407.1/NP_002737.2).
<b>Immunogen Sequence</b>	LNSKGYTKSIDIWSVGCILA EMLSNRPIFGKHYLDQLNH ILGILGSPSQEDLNCIINLK ARNYLLSLPHKNKVPNRRLF PNADSKALDLLDKMLTFNPH K



Confocal immunofluorescence analysis of HeLa cells using MAPK1/MAPK3 Rabbit polyclonal antibody (STJ119147) at dilution of 1:200. Blue: DAPI for nuclear staining.



Immunofluorescence analysis of NIH-3T3 cells using MAPK1/MAPK3 Rabbit polyclonal antibody (STJ119147) at dilution of 1:100 (40x lens). Secondary antibody: Cy3 Goat Anti-Rabbit IgG (H+L) at 1:500 dilution. Blue: DAPI for nuclear staining.



This product is suitable for in-vitro studies under the RESEARCH USE ONLY [RUO] licence. This product must not be used as for diagnostic or other medical purposes.  
St John's Laboratory Ltd, Knowledge Dock Business Centre, University Way, London, E16 2RD | Tel: 0208 223 3081