

Anti-RELA antibody (450-550) (STJ119139)

STJ119139

GENERAL INFORMATION

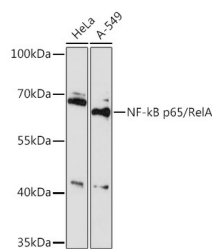
Product Type	Primary antibodies
Short Description	
Applications	WB/ELISA
Host/Source	Rabbit
Reactivity	Human/Mouse/Rat

PRODUCT PROPERTIES

Clonality	Polyclonal
Clone ID	
Concentration	Lot specific
Conjugation	Unconjugated
Purification	Affinity purification
Dilution Range	WB:1:500-1:2000 ELISA:Recommended starting concentration is 1 Mu g/mL. Please optimize the concentration based on your specific assay requirements.
Formulation	PBS with 0.01% Thimerosal, 50% Glycerol, pH 7.3.
Isotype	IgG
Storage	Store at -20°C for up to 1 year from the date of receipt, and avoid repeat freeze-thaw cycles.
Instruction	

TARGET INFORMATION

Gene ID	5970
Gene Symbol	RELA
Uniprot ID	TF65_HUMAN
Immunogen	
Immunogen Region	450-550
Specificity	A synthetic peptide corresponding to a sequence within amino acids 450-550 of human NF-kB p65/RelA (NP_068810.3).
Immunogen Sequence	LGALLGNSTDPAVFTDLASV DNSEFQQLNQGIPVAPHTT EPMLMEYPEAITRLVTGAQR PPDPAAPPLGAPGLPNGLLS GDEDFSSIADMDFSALLSQI S



Western blot analysis of various lysates using NF-kB p65/RelA Rabbit polyclonal antibody (STJ119139) at 1:500 dilution. Secondary antibody: HRP Goat Anti-Rabbit IgG (H+L) (STJ5000856) at 1:10000 dilution. Lysates/proteins: 25 Mu g per lane. Blocking buffer: 3% nonfat dry milk in TBST. Detection: ECL Enhanced Kit. Exposure time: 3min.