

Anti-NRP1 antibody (901-923) (STJ119109)
STJ119109

GENERAL INFORMATION

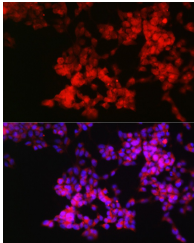
Product Type	Primary antibodies
Short Description	
Applications	WB/IF/ICC/ELISA
Host/Source	Rabbit
Reactivity	Human/Mouse/Rat

PRODUCT PROPERTIES

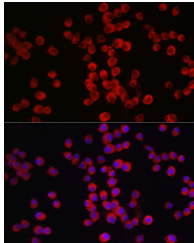
Clonality	Polyclonal
Clone ID	
Concentration	Lot specific
Conjugation	Unconjugated
Purification	Affinity purification
Dilution Range	WB:1:500-1:1000 IF/ICC:1:50-1:200 ELISA:Recommended starting concentration is 1 Mu g/mL. Please optimize the concentration based on your specific assay requirements.
Formulation	PBS with 0.02% Sodium Azide, 50% Glycerol, pH 7.3.
Isotype	IgG
Storage Instruction	Store at-20°C for up to 1 year from the date of receipt, and avoid repeat freeze-thaw cycles.

TARGET INFORMATION

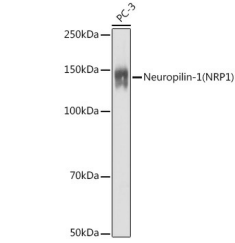
Gene ID	8829
Gene Symbol	NRP1
Uniprot ID	NRP1_HUMAN
Immunogen	
Immunogen Region	901-923
Specificity	A synthetic peptide corresponding to a sequence within amino acids 824-923 of human Neuropilin-1 (NRP1) (NP_003864.5).
Immunogen Sequence	IDETGSTPGYEGEGEGDKNI SRKPGNVLKTLDPIILITIIA MSALGVLLGAVCGVLYCAC WHNGMSERNLSALENYNFEL VDGVKLKKDKLNTQSTYSEA



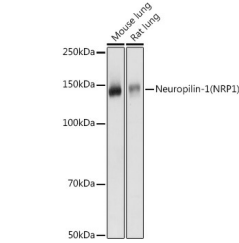
Immunofluorescence analysis of SH-SY5Y cells using Neuropilin-1 (NRP1) Rabbit polyclonal antibody (STJ119109) at dilution of 1:50 (40x lens). Blue: DAPI for nuclear staining.



Immunofluorescence analysis of Nerou-2a cells using Neuropilin-1 (NRP1) Rabbit polyclonal antibody (STJ119109) at dilution of 1:50 (40x lens). Blue: DAPI for nuclear staining.



Western blot analysis of extracts of PC-3 cells, using Neuropilin-1 (NRP1) antibody (STJ119109) at 1:1000 dilution. Secondary antibody: HRP Goat Anti-Rabbit IgG (H+L) (STJ5000856) at 1:10000 dilution. Lysates/proteins: 25 Mu g per lane. Blocking buffer: 3% nonfat dry milk in TBST. Detection: ECL Basic Kit. Exposure time: 60s.



Western blot analysis of extracts of various cell lines, using Neuropilin-1 (NRP1) antibody (STJ119109) at 1:1000 dilution. Secondary antibody: HRP Goat Anti-Rabbit IgG (H+L) (STJ5000856) at 1:10000 dilution. Lysates/proteins: 25 Mu g per lane. Blocking buffer: 3% nonfat dry milk in TBST. Detection: ECL Basic Kit. Exposure time: 10s.

This product is suitable for in-vitro studies under the RESEARCH USE ONLY [RUO] licence. This product must not be used as for diagnostic or other medical purposes.
St John's Laboratory Ltd, Knowledge Dock Business Centre, University Way, London, E16 2RD | Tel: 0208 223 3081