

Anti-CARD16 antibody (50-150) (STJ119051)

STJ119051

GENERAL INFORMATION

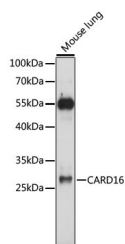
Product Type	Primary antibodies
Short Description	
Applications	WB/ELISA
Host/Source	Rabbit
Reactivity	Mouse

PRODUCT PROPERTIES

Clonality	Polyclonal
Clone ID	
Concentration	Lot specific
Conjugation	Unconjugated
Purification	Affinity purification
Dilution Range	WB:1:500-1:2000 ELISA:Recommended starting concentration is 1 Mu g/mL. Please optimize the concentration based on your specific assay requirements.
Formulation	PBS with 0.01% Thimerosal, 50% Glycerol, pH 7.3.
Isotype	IgG
Storage Instruction	Store at -20°C for up to 1 year from the date of receipt, and avoid repeat freeze-thaw cycles.

TARGET INFORMATION

Gene ID	114769
Gene Symbol	CARD16
Uniprot ID	CAR16_HUMAN
Immunogen	
Immunogen Region	50-150
Specificity	A synthetic peptide corresponding to a sequence within amino acids 50-150 of human CARD16 (NP_001017534.1).
Immunogen Sequence	VMDKTRALIDSVIPKGAQAC QICITYICEEDSYLAETLGL SAALQAVQDNPAMPTCSSPE GRIKLCFLEDAQRIWKQKLQ RCHVQNTIIKWSEYTSGSF E



Western blot analysis of lysates from mouse lung, using CARD16 Rabbit polyclonal antibody (STJ119051) at 1:1000 dilution. Secondary antibody: HRP Goat Anti-Rabbit IgG (H+L) (STJS000859) at 1:10000 dilution. Lysates/proteins: 25 Mu g per lane. Blocking buffer: 3% nonfat dry milk in TBST. Detection: ECL Basic Kit. Exposure time: 90s.

This product is suitable for in-vitro studies under the RESEARCH USE ONLY [RUO] licence. This product must not be used as for diagnostic or other medical purposes.
St John's Laboratory Ltd, Knowledge Dock Business Centre, University Way, London, E16 2RD | Tel: 0208 223 3081