

Anti-NPB antibody (1-125) (STJ119039)

STJ119039

GENERAL INFORMATION

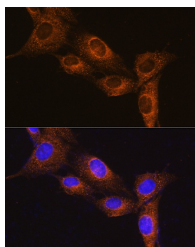
| | |
|--------------------------|--------------------|
| Product Type | Primary antibodies |
| Short Description | |
| Applications | WB/IF/ICC/ELISA |
| Host/Source | Rabbit |
| Reactivity | Human/Mouse |

PRODUCT PROPERTIES

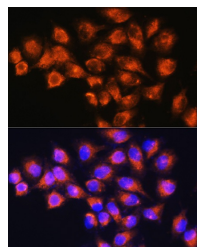
| | |
|----------------------------|---|
| Clonality | Polyclonal |
| Clone ID | |
| Concentration | Lot specific |
| Conjugation | Unconjugated |
| Purification | Affinity purification |
| Dilution Range | WB:1:500-1:2000 IF/ICC:1:50-1:200 ELISA:Recommended starting concentration is 1 Mu g/mL. Please optimize the concentration based on your specific assay requirements. |
| Formulation | PBS with 0.01% Thimerosal, 50% Glycerol, pH 7.3. |
| Isotype | IgG |
| Storage Instruction | Store at -20°C for up to 1 year from the date of receipt, and avoid repeat freeze-thaw cycles. |

TARGET INFORMATION

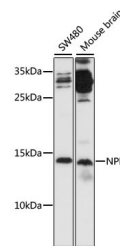
| | |
|---------------------------|---|
| Gene ID | 256933 |
| Gene Symbol | NPB |
| Uniprot ID | NPB_HUMAN |
| Immunogen | |
| Immunogen Region | 1-125 |
| Specificity | Recombinant fusion protein containing a sequence corresponding to amino acids 1-125 of human NPB (NP_683694.1). |
| Immunogen Sequence | MARSATLAAAAALCLLLAP PGLAWYKPAAGHSSYSVGRA AGLLSGLRRSPYARRSQPYR GAEPGGAGASPELQLHPRL RSLAVCVQDVAPNLQRCERL PDGRGTQCKANVFLSLRAA DCLAA |



Immunofluorescence analysis of NIH/3T3 cells using NPB Rabbit polyclonal antibody (STJ119039) at dilution of 1:100. Secondary antibody: Cy3 Goat Anti-Rabbit IgG (H+L) at 1:500 dilution. Blue: DAPI for nuclear staining.



Immunofluorescence analysis of HeLa cells using NPB Rabbit polyclonal antibody (STJ119039) at dilution of 1:100. Secondary antibody: Cy3 Goat Anti-Rabbit IgG (H+L) at 1:500 dilution. Blue: DAPI for nuclear staining.



Western blot analysis of various lysates using NPB Rabbit polyclonal antibody (STJ119039) at 1:1000 dilution. Secondary antibody: HRP-Goat Anti-Rabbit IgG (H+L) (ST/S000856) at 1:10000 dilution. Lysates/proteins: 25 Mu g per lane. Blocking buffer: 3% nonfat dry milk in TBST. Detection: ECL Basic Kit. Exposure time: 90s.

This product is suitable for in-vitro studies under the RESEARCH USE ONLY [RUO] licence. This product must not be used as for diagnostic or other medical purposes.
St John's Laboratory Ltd, Knowledge Dock Business Centre, University Way, London, E16 2RD | Tel: 0208 223 3081