

Anti-CYSLTR2 antibody (C-Term) (STJ118983)

STJ118983

GENERAL INFORMATION

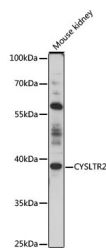
| | |
|--------------------------|--------------------|
| Product Type | Primary antibodies |
| Short Description | |
| Applications | WB/ELISA |
| Host/Source | Rabbit |
| Reactivity | Mouse |

PRODUCT PROPERTIES

| | |
|----------------------|---|
| Clonality | Polyclonal |
| Clone ID | |
| Concentration | Lot specific |
| Conjugation | Unconjugated |
| Purification | Affinity purification |
| Dilution | WB:1:500-1:2000 |
| Range | ELISA:Recommended starting concentration is 1 Mu g/mL. Please optimize the concentration based on your specific assay requirements. |
| Formulation | PBS with 0.01% Thimerosal, 50% Glycerol, pH 7.3. |
| Isotype | IgG |
| Storage | Store at -20°C for up to 1 year from the date of receipt, and avoid repeat freeze-thaw cycles. |
| Instruction | |

TARGET INFORMATION

| | |
|---------------------------|--|
| Gene ID | 57105 |
| Gene Symbol | CYSLTR2 |
| Uniprot ID | CLTR2_HUMAN |
| Immunogen | |
| Immunogen Region | C-Term |
| Specificity | A synthetic peptide corresponding to a sequence within amino acids 200 to the C-terminus of human CYSLTR2 (NP_001295394.1). TMNYIALVVGCLLPFFTL SI CYLLIIRVLLKVEVPESGLR VSHRKALTTIIITLIIFLC FLPYHTLRTVHLTTWKVGLC |
| Immunogen Sequence | KDRLHKALVITLALAAANAC FNPLLYYFAGENFKDRLKSA LRKGHPQKAKTKCVFPVSWV LRKETRV |



Western blot analysis of lysates from mouse kidney, using CYSLTR2 Rabbit polyclonal antibody (STJ118983) at 1:1000 dilution. Secondary antibody: HRP-Goat Anti-Rabbit IgG (H+L) (STJS000856) at 1:10000 dilution. Lysates/proteins: 25 Mu g per lane. Blocking buffer: 3% nonfat dry milk in TBST. Detection: ECL Basic Kit. Exposure time: 10s.

This product is suitable for in-vitro studies under the RESEARCH USE ONLY [RUO] licence. This product must not be used as for diagnostic or other medical purposes.
St John's Laboratory Ltd, Knowledge Dock Business Centre, University Way, London, E16 2RD | Tel: 0208 223 3081