

Anti-NGEF antibody (429-710) (STJ118934)

STJ118934

GENERAL INFORMATION

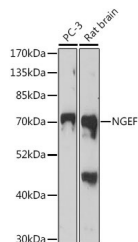
Product Type	Primary antibodies
Short Description	
Applications	WB/IF/ICC/ELISA
Host/Source	Rabbit
Reactivity	Human/Mouse/Rat

PRODUCT PROPERTIES

Clonality	Polyclonal
Clone ID	
Concentration	Lot specific
Conjugation	Unconjugated
Purification	Affinity purification
Dilution	WB:1:500-1:2000
Range	IF/ICC:1:50-1:100
	ELISA:Recommended starting concentration is 1 μ g/mL. Please optimize the concentration based on your specific assay requirements.
Formulation	PBS with 0.01% Thimerosal, 50% Glycerol, pH 7.3.
Isotype	IgG
Storage	Store at -20°C for up to 1 year from the date of receipt, and avoid repeat freeze-thaw cycles.
Instruction	

TARGET INFORMATION

Gene ID	25791
Gene Symbol	NGEF
Uniprot ID	NGEF_HUMAN
Immunogen	
Immunogen Region	429-710
Specificity	Recombinant fusion protein containing a sequence corresponding to amino acids 429-710 of human NGEF (NP_062824.2).
Immunogen Sequence	RVEERSERECTALDAHKELE MVVKACNEGVRKMSRTEQMI SIQKKMEFKIKSVPIISHSR WLLKQGELQQMSGPKTSRTL RTKKLFHEIYLFNDLLVI CRQIPGDKYQVFSAPRGLL RVEELEDQGQTLANVFILRL LENADDREATYMLKASSQSE MKRWMTSLAPNRRRTKFVSFT SRLLDPCQVQCVPYVAQQP DELTLELADILNLDKTDG WIFGERLHDQERGWFPSM



Western blot analysis of various lysates using NGEF Rabbit polyclonal antibody (STJ118934) at 1:1000 dilution. Secondary antibody: HRP Goat Anti-Rabbit IgG (H+L) (STJ5000896) at 1:10000 dilution. Lysates/proteins: 25 μ g per lane. Blocking buffer: 3% nonfat dry milk in TBST. Detection: ECL Basic Kit. Exposure time: 3min.

This product is suitable for in-vitro studies under the RESEARCH USE ONLY [RUO] licence. This product must not be used as for diagnostic or other medical purposes.

St John's Laboratory Ltd, Knowledge Dock Business Centre, University Way, London, E16 2RD | Tel: 0208 223 3081