

Anti-HRH3 antibody (250-350) (STJ118924)

STJ118924

GENERAL INFORMATION

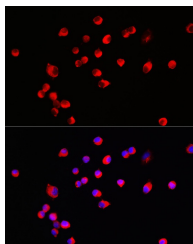
Product Type	Primary antibodies
Short Description	
Applications	WB/IF/ICC/ELISA
Host/Source	Rabbit
Reactivity	Human/Mouse/Rat

PRODUCT PROPERTIES

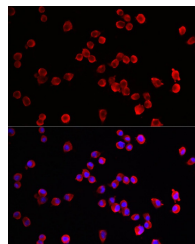
Clonality	Polyclonal
Clone ID	
Concentration	Lot specific
Conjugation	Unconjugated
Purification	Affinity purification
Dilution Range	WB:1:500-1:1000 IF/ICC:1:50-1:200 ELISA:Recommended starting concentration is 1 µg/mL. Please optimize the concentration based on your specific assay requirements.
Formulation	PBS with 0.05% Proclin300, 50% Glycerol, pH 7.3.
Isotype	IgG
Storage	Store at -20°C for up to 1 year from the date of receipt, and avoid repeat freeze-thaw cycles.
Instruction	

TARGET INFORMATION

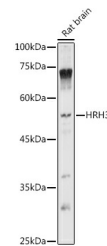
Gene ID	11255
Gene Symbol	HRH3
Uniprot ID	HRH3_HUMAN
Immunogen	
Immunogen Region	250-350
Specificity	A synthetic peptide corresponding to a sequence within amino acids 250-350 of human HRH3 (NP_009163.2).
Immunogen Sequence	PSPPPPPGCGWQKQGHGEA MPLHRYGVGEAAVGAEAGEA TLGGGGGGSVASPTSSSGS SSRGTERPRSLKRGSKPSAS SASLEKRMKMVSQSFTQRFRL



Immunofluorescence analysis of SH-SY5Y cells using HRH3 Rabbit polyclonal antibody (STJ118924) at dilution of 1:100 (40x lens). Blue: DAPI for nuclear staining.



Immunofluorescence analysis of Neuro-2a cells using HRH3 Rabbit polyclonal antibody (STJ118924) at dilution of 1:100 (40x lens). Blue: DAPI for nuclear staining.



Western blot analysis of extracts of Rat brain, using HRH3 antibody (STJ118924) at 1:1000 dilution. Secondary antibody: HRP Goat Anti-Rabbit IgG (H+L) (STJS000856) at 1:10000 dilution. Lysates/proteins: 25 µg per lane. Blocking buffer: 3% nonfat dry milk in TBST. Detection: ECL Basic Kit. Exposure time: 5s.