

Anti-ZFX antibody (180-380) (STJ118872)

STJ118872

GENERAL INFORMATION

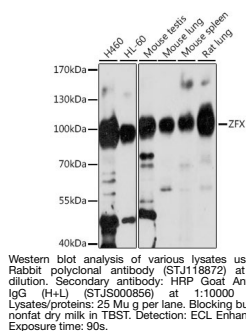
Product Type	Primary antibodies
Short Description	
Applications	WB/ELISA
Host/Source	Rabbit
Reactivity	Human/Mouse/Rat

PRODUCT PROPERTIES

Clonality	Polyclonal
Clone ID	
Concentration	Lot specific
Conjugation	Unconjugated
Purification	Affinity purification
Dilution	WB:1:500-1:2000
Range	ELISA:Recommended starting concentration is 1 µg/mL. Please optimize the concentration based on your specific assay requirements.
Formulation	PBS with 0.01% Thimerosal, 50% Glycerol, pH 7.3.
Isotype	IgG
Storage	Store at -20°C for up to 1 year from the date of receipt, and avoid repeat freeze-thaw cycles.
Instruction	

TARGET INFORMATION

Gene ID	7543
Gene Symbol	ZFX
Uniprot ID	ZFX_HUMAN
Immunogen	
Immunogen Region	180-380
Specificity	Recombinant fusion protein containing a sequence corresponding to amino acids 180-380 of human ZFX (NP_003401.2).
Immunogen Sequence	VLVADCASEAVIDANGIPVD QQDDDKGNCELYLMISLDDA GKIEHDGSSGMTMDTESEID PCKVDGTCPEVIKVIYFKAD PGEDDLGGTVDIVSEPEND HGVELLDQNSSIRVPREKMV YMTVNSQPEDEDLNVAEIA DEVYMEVIVGEEDAAAAAAA AAVHEQQMDDNEIKTFMPIA WAAAYGNNSDGIENRNGTAS A



This product is suitable for in-vitro studies under the RESEARCH USE ONLY [RUO] licence. This product must not be used as for diagnostic or other medical purposes.
St John's Laboratory Ltd, Knowledge Dock Business Centre, University Way, London, E16 2RD | Tel: 0208 223 3081