

Anti-TOP2A antibody (1100-1200) (STJ118868)

STJ118868

GENERAL INFORMATION

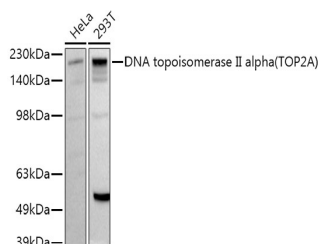
Product Type	Primary antibodies
Short Description	
Applications	WB/ELISA
Host/Source	Rabbit
Reactivity	Human

PRODUCT PROPERTIES

Clonality	Polyclonal
Clone ID	
Concentration	Lot specific
Conjugation	Unconjugated
Purification	Affinity purification
Dilution Range	WB:1:500-1:1000 ELISA:Recommended starting concentration is 1 Mu g/mL. Please optimize the concentration based on your specific assay requirements.
Formulation	PBS with 0.05% Proclin300, 50% Glycerol, pH 7.3.
Isotype	IgG
Storage	Store at -20°C for up to 1 year from the date of receipt, and avoid repeat freeze-thaw cycles.
Instruction	

TARGET INFORMATION

Gene ID	7153
Gene Symbol	TOP2A
Uniprot ID	TOP2A_HUMAN
Immunogen	
Immunogen Region	1100-1200
Specificity	A synthetic peptide corresponding to a sequence within amino acids 1100-1200 of human DNA topoisomerase II alpha (TOP2A) (NP_001058.2).
Immunogen Sequence	EEENEESDNEKETEKSDSVT DSGPTFNYLLDMPLWYLTKE KKDELCLRLRNEKEQELDTLK RKSPSDLWKEDLATFIEELE AVEAKEKQDEQVGLPGKGGK A



This product is suitable for in-vitro studies under the RESEARCH USE ONLY [RUO] licence. This product must not be used as for diagnostic or other medical purposes.
St John's Laboratory Ltd, Knowledge Dock Business Centre, University Way, London, E16 2RD | Tel: 0208 223 3081