

Anti-ECM1 antibody (280-405) (STJ118796)

STJ118796

GENERAL INFORMATION

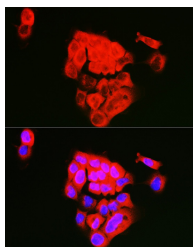
Product Type	Primary antibodies
Short Description	
Applications	WB/IF/ICC/ELISA
Host/Source	Rabbit
Reactivity	Human/Mouse

PRODUCT PROPERTIES

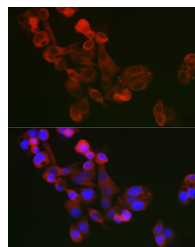
Clonality	Polyclonal
Clone ID	
Concentration	Lot specific
Conjugation	Unconjugated
Purification	Affinity purification
Dilution Range	WB:1:500-1:1000 IF/ICC:1:50-1:200 ELISA:Recommended starting concentration is 1 µg/mL. Please optimize the concentration based on your specific assay requirements.
Formulation	PBS with 0.01% Thimerosal, 50% Glycerol, pH 7.3.
Isotype	IgG
Storage Instruction	Store at -20°C for up to 1 year from the date of receipt, and avoid repeat freeze-thaw cycles.

TARGET INFORMATION

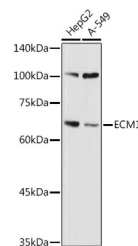
Gene ID	1893
Gene Symbol	ECM1
Uniprot ID	ECM1_HUMAN
Immunogen	
Immunogen Region	280-405
Specificity	Recombinant fusion protein containing a sequence corresponding to amino acids 280-405 of human ECM1 (NP_004416.2).
Immunogen Sequence	QLRACPSHQPDISSGLELPF PPGVPTLDNIKNICHLRRFR SVPRNLPATDPLQRELLALI QLREFQRCRCRQGNHTCTW KAWETDLDKYCDREYAVKTH HHLCCRHPSPTRDECFAARR APYPNY



Immunofluorescence analysis of A431 cells using ECM1 Rabbit polyclonal antibody (STJ118796) at dilution of 1:100 (40x lens). Secondary antibody: Cy3 Goat Anti-Rabbit IgG (H+L) at 1:500 dilution. Blue: DAPI for nuclear staining.



Immunofluorescence analysis of A375 cells using ECM1 Rabbit polyclonal antibody (STJ118796) at dilution of 1:100 (40x lens). Secondary antibody: Cy3 Goat Anti-Rabbit IgG (H+L) at 1:500 dilution. Blue: DAPI for nuclear staining.



Western blot analysis of various lysates using ECM1 Rabbit polyclonal antibody (STJ118796) at 1:1000 dilution. Secondary antibody: HRP-Goat Anti-Rabbit IgG (H+L) (STJ5000856) at 1:10000 dilution. Lysates/proteins: 25 µg per lane. Blocking buffer: 3% nonfat dry milk in TBST. Detection: ECL Basic Kit. Exposure time: 10s.