

Anti-CYP11A1 antibody (40-320) (STJ118791)

STJ118791

GENERAL INFORMATION

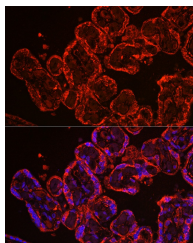
Product Type	Primary antibodies
Short Description	
Applications	WB/IHC-P/IF/ICC/ELISA
Host/Source	Rabbit
Reactivity	Human/Mouse/Rat

PRODUCT PROPERTIES

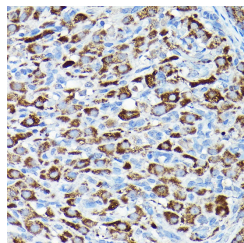
Clonality	Polyclonal
Clone ID	
Concentration	Lot specific
Conjugation	Unconjugated
Purification	Affinity purification
Dilution	WB:1:500-1:1000
Range	IHC-P:1:50-1:200 IF/ICC:1:50-1:200 ELISA:Recommended starting concentration is 1 Mu g/mL. Please optimize the concentration based on your specific assay requirements.
Formulation	PBS with 0.02% Sodium Azide, 50% Glycerol, pH 7.3.
Isotype	IgG
Storage	Store at -20°C for up to 1 year from the date of receipt, and avoid repeat freeze-thaw cycles.
Instruction	

TARGET INFORMATION

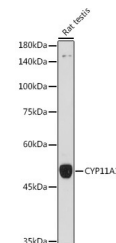
Gene ID	1583
Gene Symbol	CYP11A1
Uniprot ID	CP11A_HUMAN
Immunogen	
Immunogen Region	40-320
Specificity	A synthetic peptide corresponding to a sequence within amino acids 40-320 of human CYP11A1 (NP_000772.2).
Immunogen Sequence	ISTRSPRPFNEIPSPGDNGW LNLHYHFWRETGTHKVLHHV QNFQYGPYREKLGNVESV YVIDPEDVALLFKSEGNPE RFLIPPWVAYHQYYQRPIGV LLKSAAWKKDRVALNQEVM APEATKNFLPLDDAVSRDFV SVLHRRIKKAGSGNYSGLDIS DDLFRFAFESITNVIFGERQ GMLEEVNPEAQRFDIAIYQ MFHTSVPMNLNPPDLFRLFR TKTWKDHAVAWDVIFSKAD



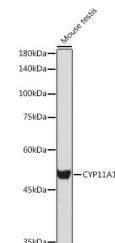
Immunofluorescence analysis of human placenta using CYP11A1 Rabbit polyclonal antibody (STJ118791) at dilution of 1:100 (40x lens). Blue: DAPI for nuclear staining.



Immunohistochemistry analysis of paraffin-embedded rat ovary using CYP11A1 Rabbit polyclonal antibody (STJ118791) at dilution of 1:200 (40x lens). Perform high pressure antigen retrieval with 10 mM citrate buffer pH 6.0 before commencing with immunohistochemistry staining protocol.



Western blot analysis of extracts of Rat testis, using CYP11A1 antibody (STJ118791) at 1:1000 dilution. Secondary antibody: HRP Goat Anti-Rabbit IgG (H+L) (STJS000856) at 1:10000 dilution. Lysates/proteins: 25 Mu g per lane. Blocking buffer: 3% nonfat dry milk in TBST. Detection: ECL Basic Kit. Exposure time: 18s.



Western blot analysis of extracts of Mouse testis, using CYP11A1 antibody (STJ118791) at 1:1000 dilution. Secondary antibody: HRP Goat Anti-Rabbit IgG (H+L) (STJS000856) at 1:10000 dilution. Lysates/proteins: 25 Mu g per lane. Blocking buffer: 3% nonfat dry milk in TBST. Detection: ECL Basic Kit. Exposure time: 5s.

This product is suitable for in-vitro studies under the RESEARCH USE ONLY [RUO] licence. This product must not be used as for diagnostic or other medical purposes.
St John's Laboratory Ltd, Knowledge Dock Business Centre, University Way, London, E16 2RD | Tel: 0208 223 3081