

Anti-BCAT1 antibody (20-190) (STJ118779)

STJ118779

GENERAL INFORMATION

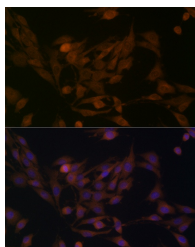
Product Type	Primary antibodies
Short Description	
Applications	WB/IF/ICC/ELISA
Host/Source	Rabbit
Reactivity	Human/Mouse/Rat

PRODUCT PROPERTIES

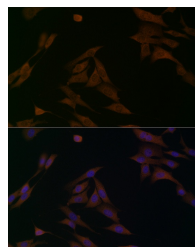
Clonality	Polyclonal
Clone ID	
Concentration	Lot specific
Conjugation	Unconjugated
Purification	Affinity purification
Dilution	WB:1:500-1:1000
Range	IF/CC:1:50-1:200
	ELISA:Recommended starting concentration is 1 μ g/mL. Please optimize the concentration based on your specific assay requirements.
Formulation	PBS with 0.01% Thimerosal, 50% Glycerol, pH 7.3.
Isotype	IgG
Storage	Store at -20°C for up to 1 year from the date of receipt, and avoid repeat freeze-thaw cycles.
Instruction	

TARGET INFORMATION

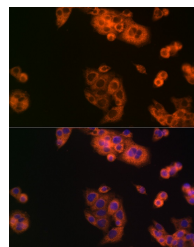
Gene ID	586
Gene Symbol	BCAT1
Uniprot ID	BCAT1_HUMAN
Immunogen	
Immunogen Region	20-190
Specificity	Recombinant fusion protein containing a sequence corresponding to amino acids 20-190 of human BCAT1 (NP_005495.2).
Immunogen Sequence	EVVGTFKAKDLIVTPATILK EKPDPPNNLVFGTVFTDHMLT VEWSSSEFGWEKPHIKPLQNL SLHPGSSALHYAVELFEGLK ARFGVDNKKIRLFQPNLNMDR MYRSAVRATLPVFDKEELLE CIQQLVKLDQEWVPEYTSAS LYIRPTFIGTEPSLGVKKPT KALLFVLLSPV



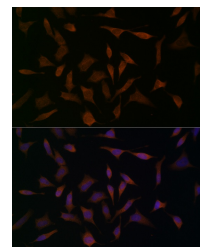
Immunofluorescence analysis of PC-12 cells using BCAT1 Rabbit polyclonal antibody (STJ118779) at dilution of 1:100 (40x lens). Secondary antibody: Cy3 Goat Anti-Rabbit IgG (H+L) at 1:500 dilution. Blue: DAPI for nuclear staining.



Immunofluorescence analysis of NIH/3T3 cells using BCAT1 Rabbit polyclonal antibody (STJ118779) at dilution of 1:100 (40x lens). Secondary antibody: Cy3 Goat Anti-Rabbit IgG (H+L) at 1:500 dilution. Blue: DAPI for nuclear staining.



Immunofluorescence analysis of HepG2 cells using BCAT1 Rabbit polyclonal antibody (STJ118779) at dilution of 1:100 (40x lens). Secondary antibody: Cy3 Goat Anti-Rabbit IgG (H+L) at 1:500 dilution. Blue: DAPI for nuclear staining.



Immunofluorescence analysis of HeLa cells using BCAT1 Rabbit polyclonal antibody (STJ118779) at dilution of 1:100 (40x lens). Secondary antibody: Cy3 Goat Anti-Rabbit IgG (H+L) at 1:500 dilution. Blue: DAPI for nuclear staining.

This product is suitable for in-vitro studies under the RESEARCH USE ONLY [RUO] licence. This product must not be used as for diagnostic or other medical purposes.
St John's Laboratory Ltd, Knowledge Dock Business Centre, University Way, London, E16 2RD | Tel: 0208 223 3081