

## Anti-COX6C antibody (1-75) (STJ118689)

STJ118689

### GENERAL INFORMATION

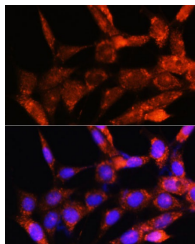
<b>Product Type</b>	Primary antibodies
<b>Short Description</b>	
<b>Applications</b>	WB/IF/ICC/ELISA
<b>Host/Source</b>	Rabbit
<b>Reactivity</b>	Mouse

### PRODUCT PROPERTIES

<b>Clonality</b>	Polyclonal
<b>Clone ID</b>	
<b>Concentration</b>	Lot specific
<b>Conjugation</b>	Unconjugated
<b>Purification</b>	Affinity purification
<b>Dilution Range</b>	WB:1:500-1:2000 IF/ICC:1:50-1:200 ELISA:Recommended starting concentration is 1 $\mu$ g/mL. Please optimize the concentration based on your specific assay requirements.
<b>Formulation</b>	PBS with 0.01% Thimerosal, 50% Glycerol, pH 7.3.
<b>Isotype</b>	IgG
<b>Storage Instruction</b>	Store at -20°C for up to 1 year from the date of receipt, and avoid repeat freeze-thaw cycles.

### TARGET INFORMATION

<b>Gene ID</b>	1345
<b>Gene Symbol</b>	COX6C
<b>Uniprot ID</b>	COX6C_HUMAN
<b>Immunogen</b>	
<b>Immunogen Region</b>	1-75
<b>Specificity</b>	A synthetic peptide corresponding to a sequence within amino acids 1-75 of human COX6C (NP_004365.1).
<b>Immunogen Sequence</b>	MAPEVLPKPRMRGLLARRLR NHMAVAFVLSLGVAALYKFR VADQRKKAYADFYRNYDVMK DFEEMRKAGIFQSVK



Immunofluorescence analysis of NIH/3T3 cells using COX6C Rabbit polyclonal antibody (STJ118689) at dilution of 1:100. Secondary antibody: Cy3 Goat Anti-Rabbit IgG (H+L) at 1:500 dilution. Blue: DAPI for nuclear staining.