

Anti-G6PC3 antibody (4-103) (STJ118673)

STJ118673

GENERAL INFORMATION

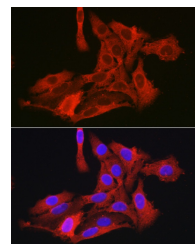
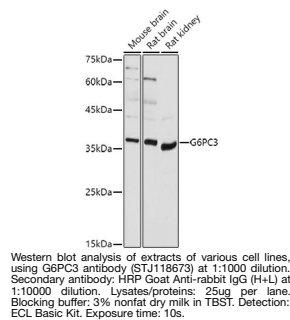
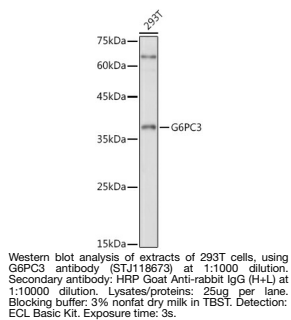
Product Type	Primary antibodies
Short Description	
Applications	WB/IF/ICC/ELISA
Host/Source	Rabbit
Reactivity	Human/Mouse/Rat

PRODUCT PROPERTIES

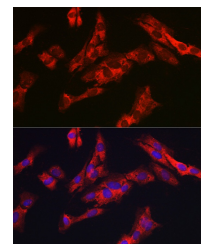
Clonality	Polyclonal
Clone ID	
Concentration	Lot specific
Conjugation	Unconjugated
Purification	Affinity purification
Dilution Range	WB:1:500-1:1000 IF/ICC:1:50-1:200 ELISA:Recommended starting concentration is 1 µg/mL. Please optimize the concentration based on your specific assay requirements.
Formulation	PBS with 0.01% Thimerosal, 50% Glycerol, pH 7.3.
Isotype	IgG
Storage Instruction	Store at -20°C for up to 1 year from the date of receipt, and avoid repeat freeze-thaw cycles.

TARGET INFORMATION

Gene ID	92579
Gene Symbol	G6PC3
Uniprot ID	G6PC3_HUMAN
Immunogen	
Immunogen Region	4-103
Specificity	A synthetic peptide corresponding to a sequence within amino acids 4-103 of human G6PC3 (NP_612396.1).
Immunogen Sequence	TLGAGIVIAEALQNQLAWLE NVWLWITFLGDPKILFLFYF PAAYYASRRVGI AVLWISLI TEWLNLIKWF LFGDRPFWW VHESGYYSQAPAQVHQFPSS



Immunofluorescence analysis of A-549 cells using G6PC3 rabbit polyclonal antibody (STJ118673) at dilution of 1:200 (40x lens). Blue: DAPI for nuclear staining.



Immunofluorescence analysis of C6 cells using G6PC3 rabbit polyclonal antibody (STJ118673) at dilution of 1:200 (40x lens). Blue: DAPI for nuclear staining.

This product is suitable for in-vitro studies under the RESEARCH USE ONLY [RUO] licence. This product must not be used as for diagnostic or other medical purposes.
St John's Laboratory Ltd, Knowledge Dock Business Centre, University Way, London, E16 2RD | Tel: 0208 223 3081