

Anti-CSNK1A1 antibody (250-337) (STJ118665)
STJ118665

GENERAL INFORMATION

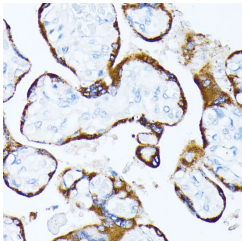
Product Type	Primary antibodies
Short Description	
Applications	WB/IHC-P/IF/ICC/ELISA
Host/Source	Rabbit
Reactivity	Human/Mouse/Rat

PRODUCT PROPERTIES

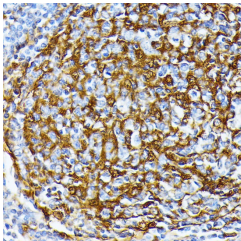
Clonality	Polyclonal
Clone ID	
Concentration	Lot specific
Conjugation	Unconjugated
Purification	Affinity purification
Dilution Range	WB:1:500-1:2000 IHC-P:1:50-1:200 IF/ICC:1:50-1:200 ELISA:Recommended starting concentration is 1 μ g/mL. Please optimize the concentration based on your specific assay requirements.
Formulation	PBS with 0.01% Thimerosal, 50% Glycerol, pH 7.3.
Isotype	IgG
Storage Instruction	Store at -20°C for up to 1 year from the date of receipt, and avoid repeat freeze-thaw cycles.

TARGET INFORMATION

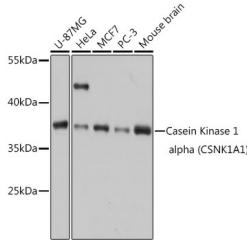
Gene ID	1452
Gene Symbol	CSNK1A1
Uniprot ID	KC1A_HUMAN
Immunogen	
Immunogen Region	250-337
Specificity	A synthetic peptide corresponding to a sequence within amino acids 238-337 of human Casein Kinase 1 alpha (CSNK1A1) (NP_001883.4).
Immunogen Sequence	EKKMSTPVEVLCKGFPAEFA MYLNYCRGLRFEEAPDYYML RQLFRILFRTLNHQYDYTFD WTMLKQKAAQAASSSGQGQ QAQTPTGKQTDKTKSNMKG



Immunohistochemistry analysis of Casein Kinase 1 alpha (CSNK1A1) in paraffin-embedded human placenta using Casein Kinase 1 alpha (CSNK1A1) Rabbit polyclonal antibody (STJ118665) at dilution of 1:100 (40x lens). Perform microwave antigen retrieval with 10 mM PBS buffer pH 7. 2 before commencing with immunohistochemistry staining protocol.



Immunohistochemistry analysis of Casein Kinase 1 alpha (CSNK1A1) in paraffin-embedded human tonsil using Casein Kinase 1 alpha (CSNK1A1) Rabbit polyclonal antibody (STJ118665) at dilution of 1:100 (40x lens). Perform microwave antigen retrieval with 10 mM PBS buffer pH 7. 2 before commencing with immunohistochemistry staining protocol.



Western blot analysis of various lysates using Casein Kinase 1 alpha (CSNK1A1) Rabbit polyclonal antibody (STJ118665) at 1:1000 dilution. Secondary antibody: HRP Goat Anti-Rabbit IgG (H+L) (STJS000856) at 1:10000 dilution. Lysates/proteins: 25 μ g per lane. Blocking buffer: 3% nonfat dry milk in TBST. Detection: ECL Basic Kit. Exposure time: 1s.

This product is suitable for in-vitro studies under the RESEARCH USE ONLY [RUO] licence. This product must not be used as for diagnostic or other medical purposes.
St John's Laboratory Ltd, Knowledge Dock Business Centre, University Way, London, E16 2RD | Tel: 0208 223 3081