

Anti-SLC5A12 antibody (200-280) (STJ118617)

STJ118617

GENERAL INFORMATION

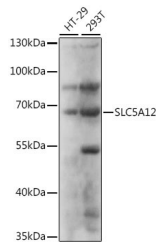
Product Type	Primary antibodies
Short Description	
Applications	WB/ELISA
Host/Source	Rabbit
Reactivity	Human

PRODUCT PROPERTIES

Clonality	Polyclonal
Clone ID	
Concentration	Lot specific
Conjugation	Unconjugated
Purification	Affinity purification
Dilution Range	WB:1:500-1:2000 ELISA:Recommended starting concentration is 1 μ g/mL. Please optimize the concentration based on your specific assay requirements.
Formulation	PBS with 0.01% Thimerosal, 50% Glycerol, pH 7.3.
Isotype	IgG
Storage Instruction	Store at -20°C for up to 1 year from the date of receipt, and avoid repeat freeze-thaw cycles.

TARGET INFORMATION

Gene ID	159963
Gene Symbol	SLC5A12
Uniprot ID	SC5AC_HUMAN
Immunogen	
Immunogen Region	200-280
Specificity	Recombinant fusion protein containing a sequence corresponding to amino acids 200-280 of human SLC5A12 (NP_848593.2).
Immunogen Sequence	LIQGSTHAGGFHNVLEQSTN GSRLHIFDFVDVPLRRHTFW TITVGGTFTWLGIYGVNQST IQRCISCKTEKHAKLALYFN L



Western blot analysis of various lysates using SLC5A12 Rabbit polyclonal antibody (STJ118617) at 1:1000 dilution. Secondary antibody: HRP Goat Anti-Rabbit IgG (H+L) (STJS000856) at 1:10000 dilution. Lysates/proteins: 25 μ g per lane. Blocking buffer: 3% nonfat dry milk in TBST. Detection: ECL Basic Kit. Exposure time: 5s.

This product is suitable for in-vitro studies under the RESEARCH USE ONLY [RUO] licence. This product must not be used as for diagnostic or other medical purposes.
St John's Laboratory Ltd, Knowledge Dock Business Centre, University Way, London, E16 2RD | Tel: 0208 223 3081