

Anti-WBSCR27 antibody (1-245) (STJ118616)
STJ118616

GENERAL INFORMATION

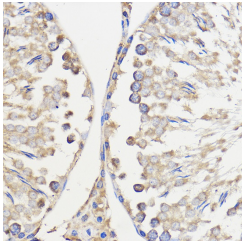
Product Type	Primary antibodies
Short Description	
Applications	WB/IHC-P/ELISA
Host/Source	Rabbit
Reactivity	Human/Mouse/Rat

PRODUCT PROPERTIES

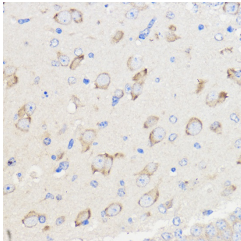
Clonality	Polyclonal
Clone ID	
Concentration	Lot specific
Conjugation	Unconjugated
Purification	Affinity purification
Dilution	WB:1:500-1:2000
Range	IHC-P:1:50-1:200
	ELISA:Recommended starting concentration is 1 μ g/mL. Please optimize the concentration based on your specific assay requirements.
Formulation	PBS with 0.01% Thimerosal, 50% Glycerol, pH 7.3.
Isotype	IgG
Storage Instruction	Store at -20°C for up to 1 year from the date of receipt, and avoid repeat freeze-thaw cycles.

TARGET INFORMATION

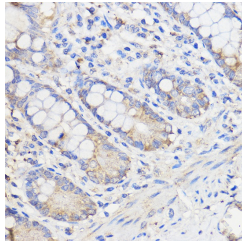
Gene ID	155368
Gene Symbol	METTL27
Uniprot ID	MET27_HUMAN
Immunogen	
Immunogen Region	1-245
Specificity	Recombinant fusion protein containing a sequence corresponding to amino acids 1-245 of human WBSCR27 (NP_689772.2).
Immunogen Sequence	MAQEEGGSLPEVRARVRAAH GIPDLAQKLHFYDRWAPDYD QDVATLLYRAPRLAVDCLTQ ALPGPPHSALILDVACGTGL VAAELRAPGFLQLHGVDGSP GMLEQAQAPGLYQRLSLCTL GQEPLPSPGFTFDVAVLIVA LSDGQVPCNAIPELHVTKPG GLVCLTRTRTNSSNLQYKEAL EATLDRLEQAGMWEGLVAVP VDRLWTAGSWLPPSWRWYPA SLPRMASSPALSTCTESGR



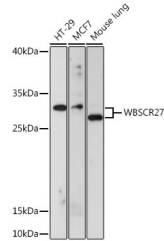
Immunohistochemistry analysis of WBSCR27 in paraffin-embedded Rat testis using WBSCR27 Rabbit polyclonal antibody (STJ118616) at dilution of 1:50 (40x lens). Perform microwave antigen retrieval with 10 mM PBS buffer pH 7.2 before commencing with immunohistochemistry staining protocol.



Immunohistochemistry analysis of WBSCR27 in paraffin-embedded Mouse brain using WBSCR27 Rabbit polyclonal antibody (STJ118616) at dilution of 1:50 (40x lens). Perform microwave antigen retrieval with 10 mM PBS buffer pH 7.2 before commencing with immunohistochemistry staining protocol.



Immunohistochemistry analysis of WBSCR27 in paraffin-embedded Human colon using WBSCR27 Rabbit polyclonal antibody (STJ118616) at dilution of 1:50 (40x lens). Perform microwave antigen retrieval with 10 mM PBS buffer pH 7.2 before commencing with immunohistochemistry staining protocol.



Western blot analysis of various lysates using WBSCR27 Rabbit polyclonal antibody (STJ118616) at 1:1000 dilution. Secondary antibody: HRP Goat Anti-Rabbit IgG (H+L) (STJ5000856) at 1:10000 dilution. Lysates/proteins: 25 μ g per lane. Blocking buffer: 3% nonfat dry milk in TBST. Detection: ECL Basic Kit. Exposure time: 15s.

This product is suitable for in-vitro studies under the RESEARCH USE ONLY [RUO] licence. This product must not be used as for diagnostic or other medical purposes.
St John's Laboratory Ltd, Knowledge Dock Business Centre, University Way, London, E16 2RD | Tel: 0208 223 3081