

Anti-S100A16 antibody (1-103) (STJ118607)

STJ118607

GENERAL INFORMATION

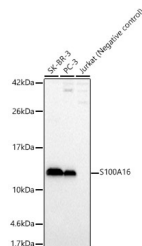
Product Type	Primary antibodies
Short Description	
Applications	WB/ELISA
Host/Source	Rabbit
Reactivity	Human/Mouse/Rat

PRODUCT PROPERTIES

Clonality	Polyclonal
Clone ID	
Concentration	Lot specific
Conjugation	Unconjugated
Purification	Affinity purification
Dilution Range	WB:1:500-1:2000 ELISA:Recommended starting concentration is 1 Mu g/mL. Please optimize the concentration based on your specific assay requirements.
Formulation	PBS with 0.05% Proclin300, 50% Glycerol, pH 7.3.
Isotype	IgG
Storage	Store at -20°C for up to 1 year from the date of receipt, and avoid repeat freeze-thaw cycles.
Instruction	

TARGET INFORMATION

Gene ID	140576
Gene Symbol	S100A16
Uniprot ID	S10AG_HUMAN
Immunogen	
Immunogen Region	1-103
Specificity	Recombinant fusion protein containing a sequence corresponding to amino acids 1-103 of human S100A16 (NP_525127.1).
Immunogen Sequence	MSDCYTELEKAVIVLVENFY KYVSKYSLVKNKISKSSFRE MLQKELNHMLSDTGNRKAAD KLIQNLDANHDGRISFDEYW TLIGGITGPIAKLIHEQEQQ SSS



Western blot analysis of various lysates, using S100A16 Rabbit polyclonal antibody (STJ118607) at 1:2000 dilution. Secondary antibody: HRP Goat Anti-Rabbit IgG (H+L) (STJ5000856) at 1:10000 dilution. Lysates/proteins: 25ug per lane. Blocking buffer: 3% nonfat dry milk in TBST. Detection: ECL Basic Kit. Exposure time: 30s.

This product is suitable for in-vitro studies under the RESEARCH USE ONLY [RUO] licence. This product must not be used as for diagnostic or other medical purposes.
St John's Laboratory Ltd, Knowledge Dock Business Centre, University Way, London, E16 2RD | Tel: 0208 223 3081