

Anti-MAS1L antibody (1-70) (STJ118601)

STJ118601

GENERAL INFORMATION

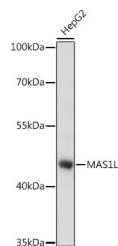
| | |
|--------------------------|--------------------|
| Product Type | Primary antibodies |
| Short Description | |
| Applications | WB/ELISA |
| Host/Source | Rabbit |
| Reactivity | Human |

PRODUCT PROPERTIES

| | |
|----------------------------|---|
| Clonality | Polyclonal |
| Clone ID | |
| Concentration | Lot specific |
| Conjugation | Unconjugated |
| Purification | Affinity purification |
| Dilution Range | WB:1:500-1:2000 ELISA:Recommended starting concentration is 1 μ g/mL. Please optimize the concentration based on your specific assay requirements. |
| Formulation | PBS with 0.01% Thimerosal, 50% Glycerol, pH 7.3. |
| Isotype | IgG |
| Storage Instruction | Store at -20°C for up to 1 year from the date of receipt, and avoid repeat freeze-thaw cycles. |

TARGET INFORMATION

| | |
|---------------------------|--|
| Gene ID | 116511 |
| Gene Symbol | MAS1L |
| Uniprot ID | MAS1L_HUMAN |
| Immunogen | |
| Immunogen Region | 1-70 |
| Specificity | Recombinant fusion protein containing a sequence corresponding to amino acids 1-70 of human MAS1L (NP_443199.1). |
| Immunogen Sequence | MMWGKICWFWSQRAGWTVFAE SQISLSCSLCLHSGDQEAQN PNLVSQLCGVFLQNETNETI HMQMSMAVGG |



Western blot analysis of lysates from HepG2 cells, using MAS1L Rabbit polyclonal antibody (STJ118601) at 1:1000 dilution. Secondary antibody: HRP Goat Anti-Rabbit IgG (H+L) (STJS000856) at 1:10000 dilution. Lysates/proteins: 25 μ g per lane. Blocking buffer: 3% nonfat dry milk in TBST. Detection: ECL Basic Kit. Exposure time: 3s.

This product is suitable for in-vitro studies under the RESEARCH USE ONLY [RUO] licence. This product must not be used as for diagnostic or other medical purposes.
St John's Laboratory Ltd, Knowledge Dock Business Centre, University Way, London, E16 2RD | Tel: 0208 223 3081