

Anti-TRPV6 antibody (67-80) (STJ118568)

STJ118568

GENERAL INFORMATION

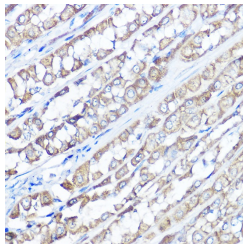
Product Type	Primary antibodies
Short Description	
Applications	WB/IHC-P/ELISA
Host/Source	Rabbit
Reactivity	Human/Mouse/Rat

PRODUCT PROPERTIES

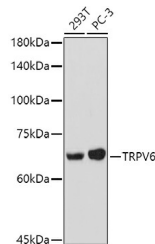
Clonality	Polyclonal
Clone ID	
Concentration	Lot specific
Conjugation	Unconjugated
Purification	Affinity purification
Dilution Range	WB:1:500-1:1000 IHC-P:1:50-1:200 ELISA:Recommended starting concentration is 1 Mu g/mL. Please optimize the concentration based on your specific assay requirements.
Formulation	PBS with 0.05% Proclin300, 50% Glycerol, pH 7.3.
Isotype	IgG
Storage	Store at -20°C for up to 1 year from the date of receipt, and avoid repeat freeze-thaw cycles.
Instruction	

TARGET INFORMATION

Gene ID	55503
Gene Symbol	TRPV6
Uniprot ID	TRPV6_HUMAN
Immunogen	
Immunogen Region	67-80
Specificity	A synthetic peptide corresponding to a sequence within amino acids 1-100 of human TRPV6 (NP_061116.5).
Immunogen Sequence	MGPLQGDGGPALGGADVAPR LSPVRVWPRPQAPKEPALHP MGLSLPKEKGLILCLWSKFC RWFQRRESWAQSRDEQNLLQ QKRIWESPLLLAAKDNDVQA



Immunohistochemistry analysis of paraffin-embedded rat stomach using TRPV6 Rabbit polyclonal antibody (STJ118568) at dilution of 1:100 (40x lens). Perform high pressure antigen retrieval with 10 mM citrate buffer pH 6.0 before commencing with immunohistochemistry staining protocol.



Western blot analysis of extracts of various cell lines, using TRPV6 antibody (STJ118568) at 1:1000 dilution. Secondary antibody: HRP Goat Anti-Rabbit IgG (H+L) (STJS000856) at 1:10000 dilution. Lysates/proteins: 25 Mu g per lane. Blocking buffer: 3% nonfat dry milk in TBST. Detection: ECL Basic Kit. Exposure time: 90s.