

Anti-EML4 antibody (360-560) (STJ118557)

STJ118557

GENERAL INFORMATION

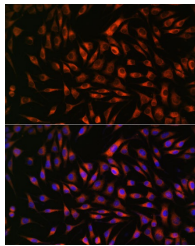
Product Type	Primary antibodies
Short Description	
Applications	WB/IHC-P/IF/ICC/ELISA
Host/Source	Rabbit
Reactivity	Human/Mouse/Rat

PRODUCT PROPERTIES

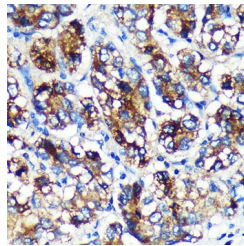
Clonality	Polyclonal
Clone ID	
Concentration	Lot specific
Conjugation	Unconjugated
Purification	Affinity purification
Dilution Range	WB:1:500-1:2000 IHC-P:1:50-1:200 IF/ICC:1:50-1:200 ELISA:Recommended starting concentration is 1 μ g/mL. Please optimize the concentration based on your specific assay requirements.
Formulation	PBS with 0.01% Thimerosal, 50% Glycerol, pH 7.3.
Isotype	IgG
Storage	Store at -20°C for up to 1 year from the date of receipt, and avoid repeat freeze-thaw cycles.
Instruction	

TARGET INFORMATION

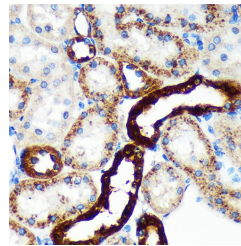
Gene ID	27436
Gene Symbol	EML4
Uniprot ID	EMAL4_HUMAN
Immunogen	
Region	360-560
Specificity	Recombinant fusion protein containing a sequence corresponding to amino acids 360-560 of human EML4 (NP_061936.2).
Immunogen Sequence	GTFERGVGCLDFSKADSGVH LCVDDSNHMLTVWDWQKK AKGAEIKTTNEVVLAVEFHP TDANTIITCGKSHIFFWTWS GNSLTRKQGIFGKYKPKFV QCLAFLGNGDVLTDGSGGVM LIWSKTTVEPTPGKPGKGVY QISKQIKAHDGSVFTLCQMR NGMLLTGGGKDRKIILWDHD LNPEREIEVPDQYGTIRAVA E



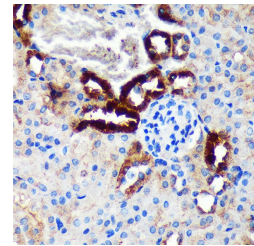
Immunofluorescence analysis of L929 cells using EML4 Rabbit polyclonal antibody (STJ118557) at dilution of 1:100. Secondary antibody: Cy3 Goat Anti-Rabbit IgG (H+L) at 1:500 dilution. Blue: DAPI for nuclear staining.



Immunohistochemistry analysis of EML4 in paraffin-embedded Human liver cancer using EML4 Rabbit polyclonal antibody (STJ118557) at dilution of 1:100 (40x lens). Perform microwave antigen retrieval with 10 mM PBS buffer pH 7.2 before commencing with immunohistochemistry staining protocol.



Immunohistochemistry analysis of EML4 in paraffin-embedded Rat kidney using EML4 Rabbit polyclonal antibody (STJ118557) at dilution of 1:100 (40x lens). Perform microwave antigen retrieval with 10 mM PBS buffer pH 7.2 before commencing with immunohistochemistry staining protocol.



Immunohistochemistry analysis of EML4 in paraffin-embedded Mouse kidney using EML4 Rabbit polyclonal antibody (STJ118557) at dilution of 1:100 (40x lens). Perform microwave antigen retrieval with 10 mM PBS buffer pH 7.2 before commencing with immunohistochemistry staining protocol.

This product is suitable for in-vitro studies under the RESEARCH USE ONLY [RUO] licence. This product must not be used as for diagnostic or other medical purposes.
St John's Laboratory Ltd, Knowledge Dock Business Centre, University Way, London, E16 2RD | Tel: 0208 223 3081